

Optimizing Injectable in situ Forming Implants for Sustained Release of Ophthalmic Therapeutics

Valerie Eta D. Sc (Tech)

REBIO
P H A R M A



INTEGRATING
Delivery Science
ACROSS DISCIPLINES

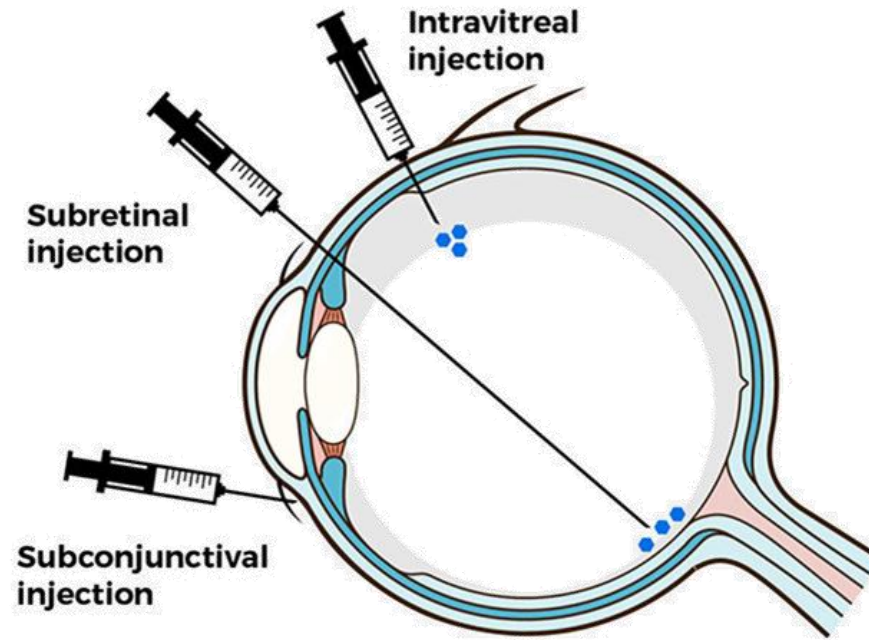


Optimizing Injectable in situ Forming Implants for Sustained Release of Ophthalmic Therapeutics

Standard of care treatments in the eye have been daily drops or regular injections



Rebio's SiSu® technology can deliver a broad range of APIs for up to 6 months with a single treatment



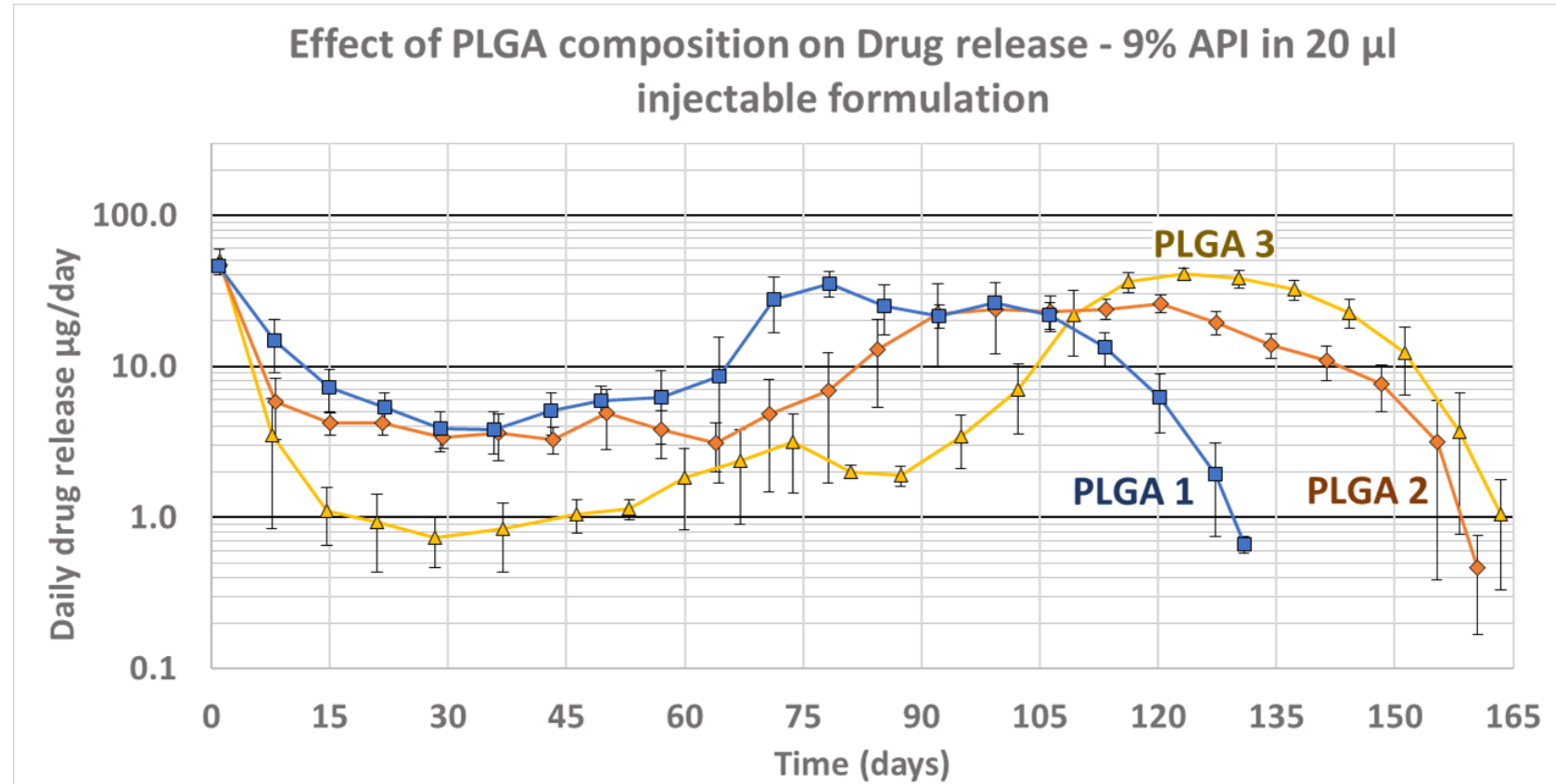
ReBio's focus on
Subconjunctival and
Intravitreal dosing

ReBio's SiSu® In Situ Forming Implant Technology

- PLGA-based phase-inverting anhydrous liquid polymer platform
- Release effective levels of therapeutics locally

Effect of PLGA composition on Prostaglandin drug release

In Vitro dissolution



→ adjustable drug release In Vitro

Prostaglandin Analogue Drug – Intravitreal Implant

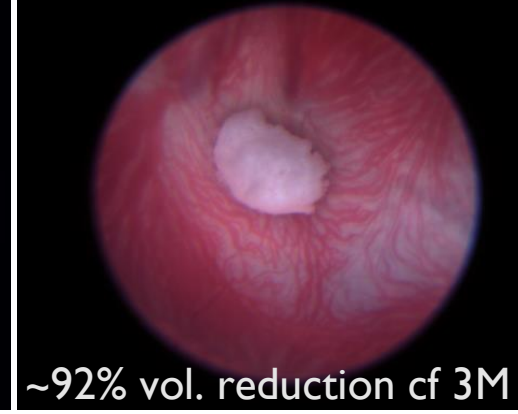
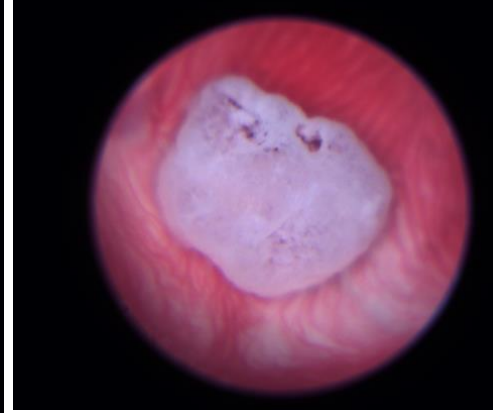
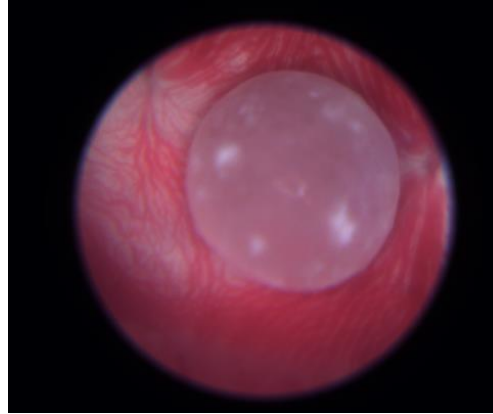
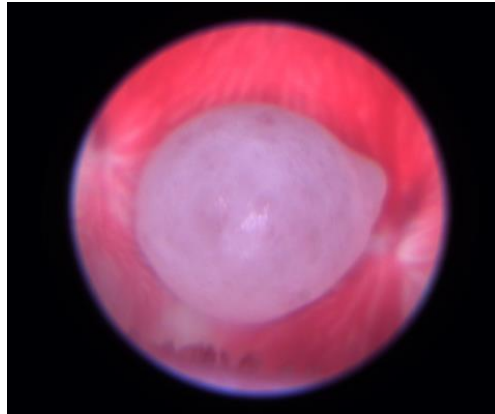
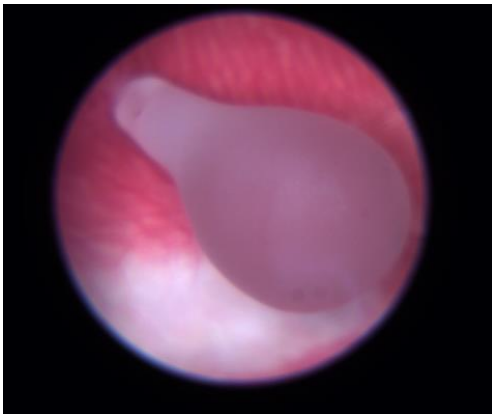
Day 0

1 month

2 months

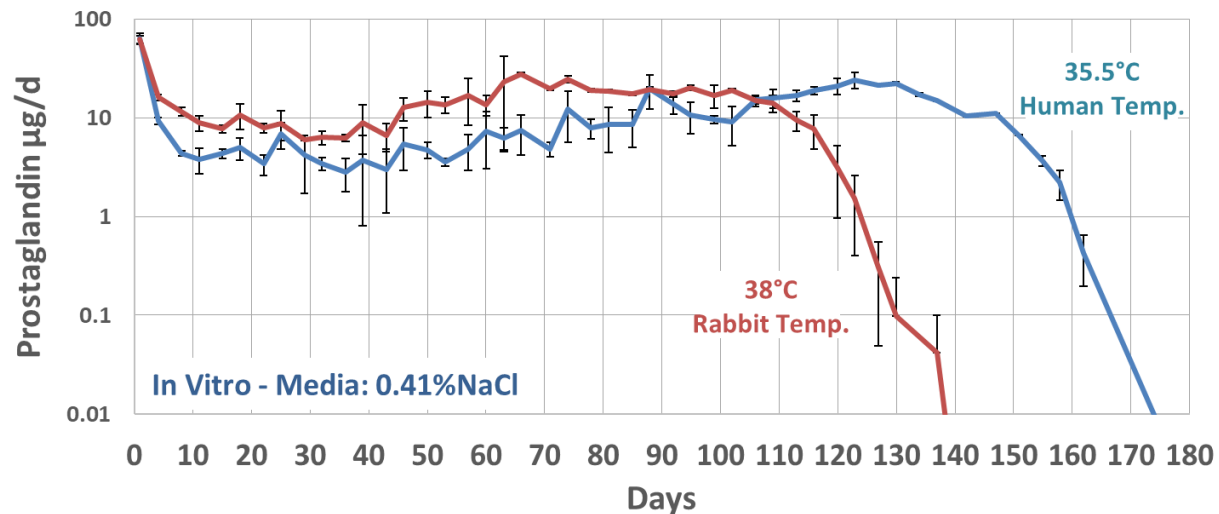
3 months

> 7 months

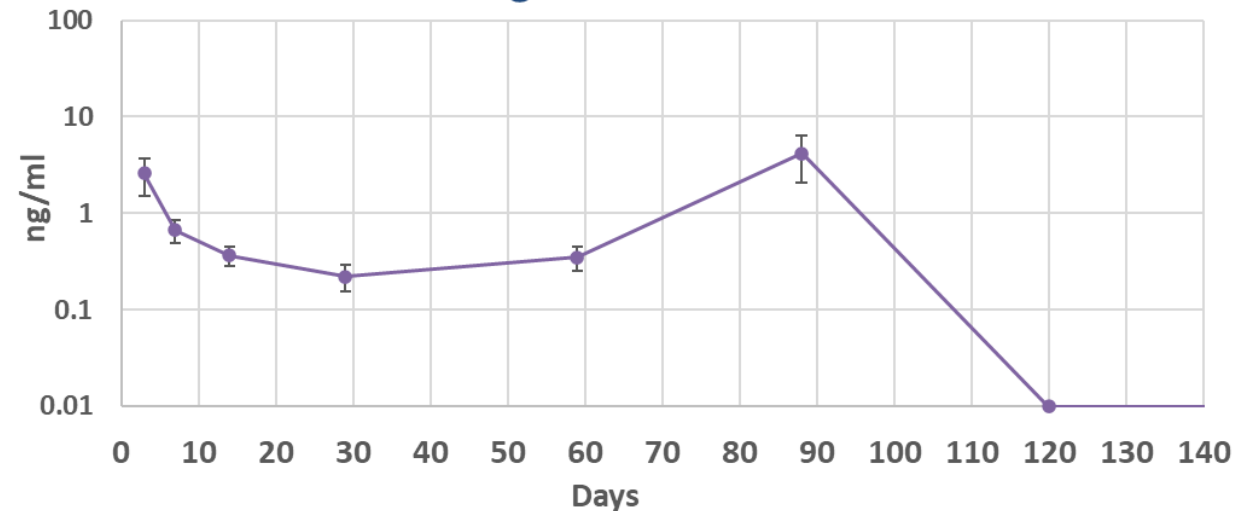


→ *In vitro* - *In vivo* correlation

In Vitro - Prostaglandin daily release

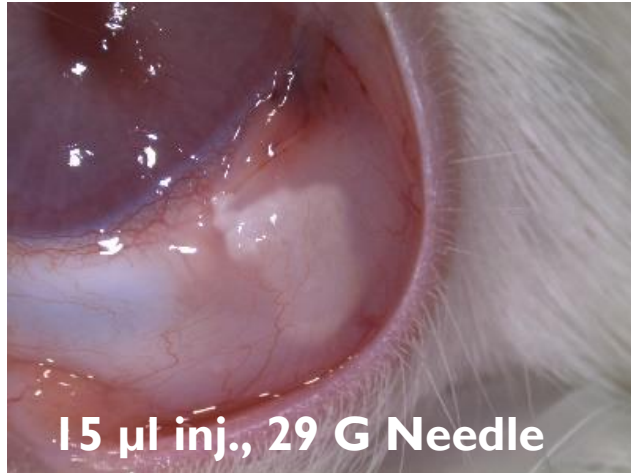


In Vivo - Prostaglandin AH concentration

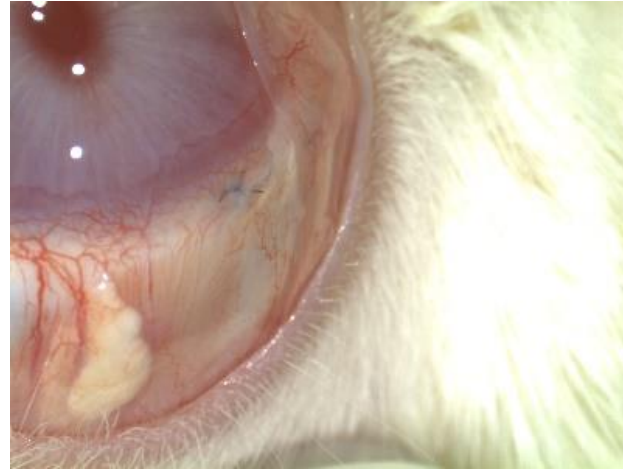


Post Operative Healing (1 cm Incision Just Above Limbus) Sub-Conjunctival Corticosteroid SiSu[®] Injection - Rabbit

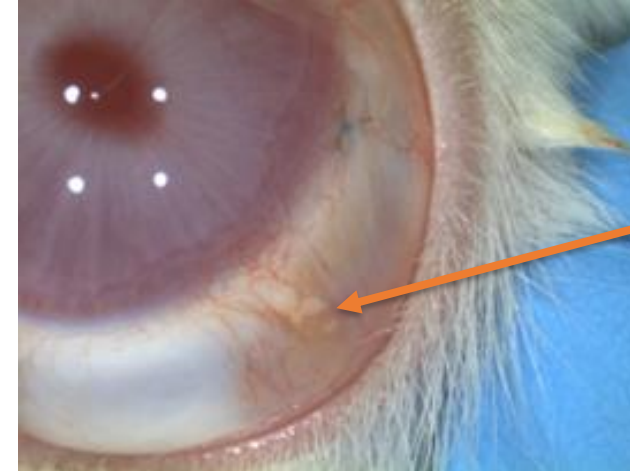
Day 0



2 months

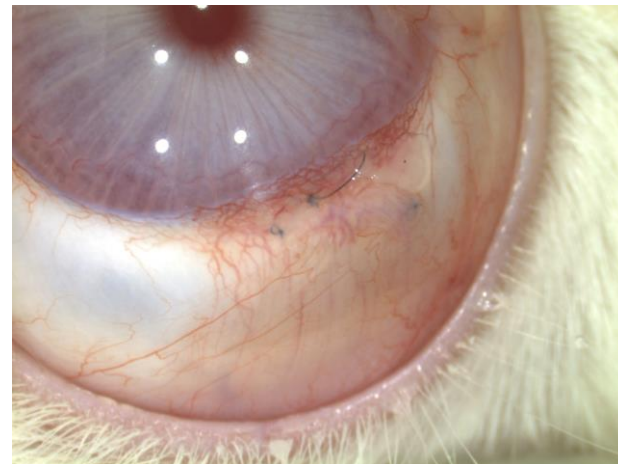
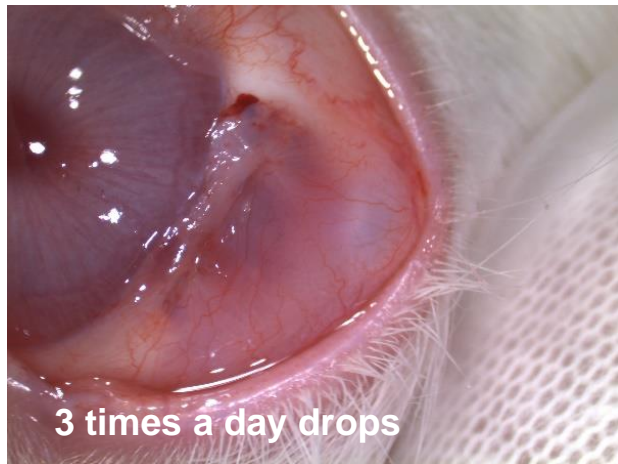


3.5 months



Disappearing
SiSu[®] implant

Control – Corticosteroid eye drops



**Comparable wound healing
and duration – without any
adverse effect**

Poster No. 886



Thank You

Sustained Treatment
for Chronic Eye Diseases



**Annual Meeting
AND Exposition**
JULY 8-12, 2024 • BOLOGNA, ITALY

INTEGRATING
Delivery Science
ACROSS DISCIPLINES

