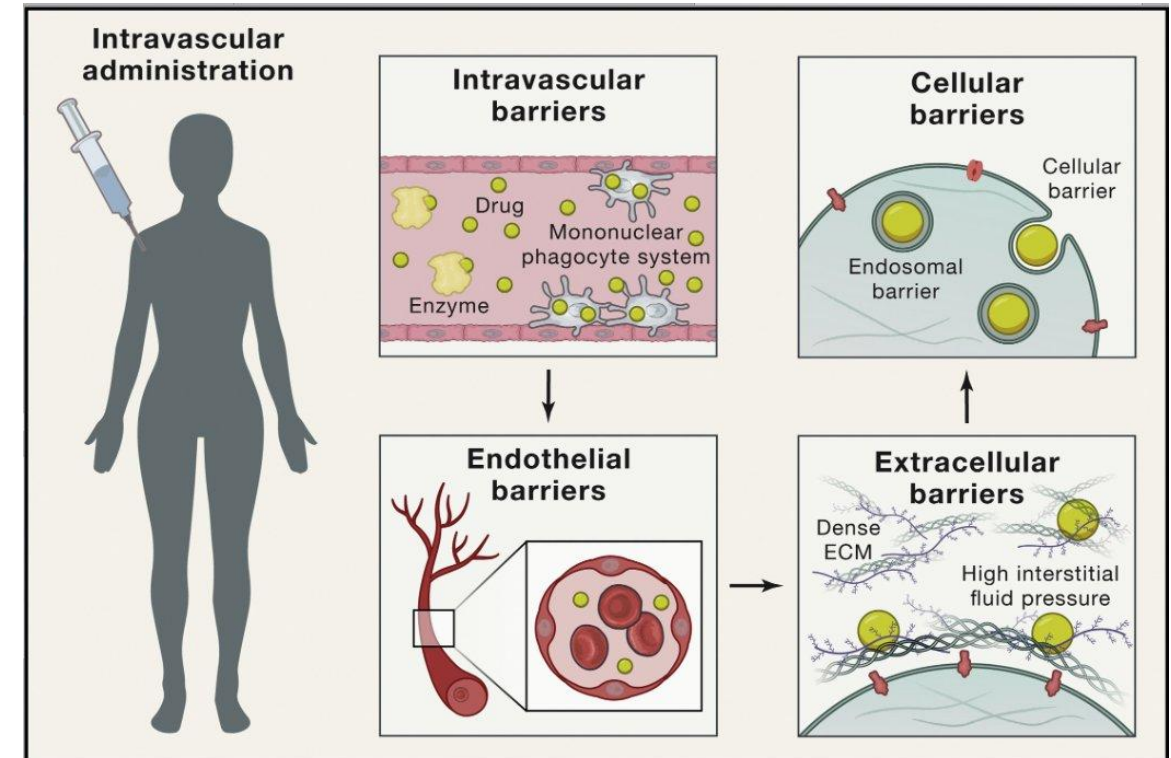
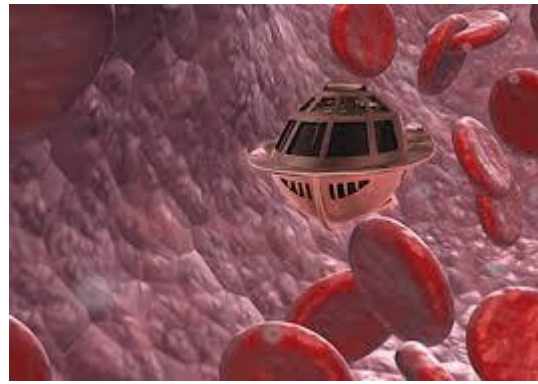
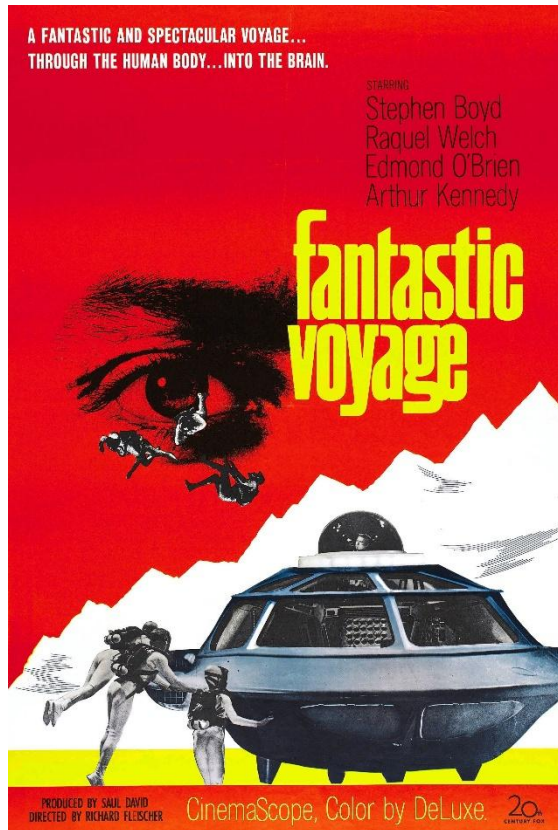




Biomimetic Nanoformulations for Targeting Inflamed Vasculature

- **Francesca Taraballi,
Ph.D.**
- Director Center for
Musculoskeletal
Regeneration
- Houston Methodist
Research Institute

NANOMEDICINE – THE SEMI-UNTOLD STORY



Zongmin Zhao, et al. Cell 2020 181,:1, 151-167

A black and white portrait of Pablo Picasso, showing him from the chest up. He is wearing a dark, textured coat and looking slightly to the right of the camera with a serious expression. The background is dark and indistinct.

Good artists
copy, great
artists steal.

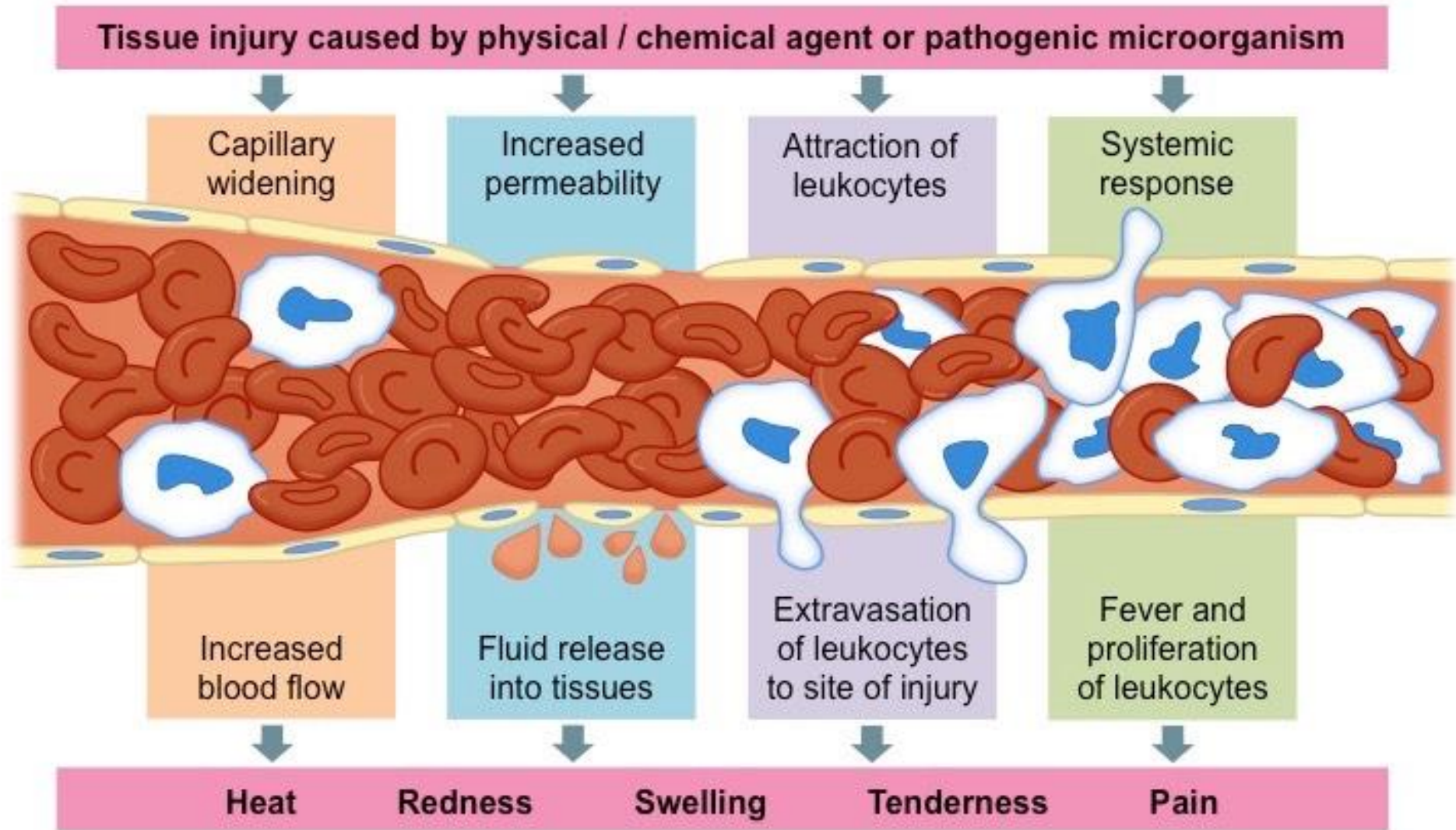
- Pablo Picasso

Quote Source: InfoWorld, Vol. 11, Nr. 1-9 (1989).

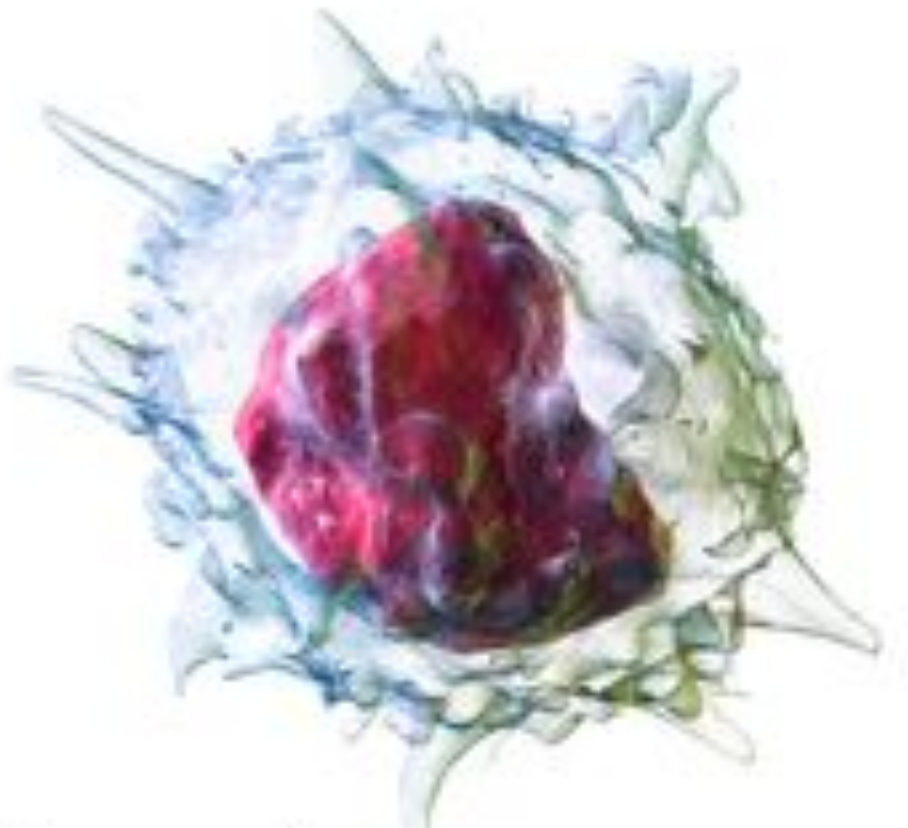
Photo: 1908, (C) RMN-Grand Palais, <http://www.photo.rmn.fr/archive/90-008868-2C6NUOX1XDIK.html>

QuotesCosmos

....LET'S STEAL FROM NATURE

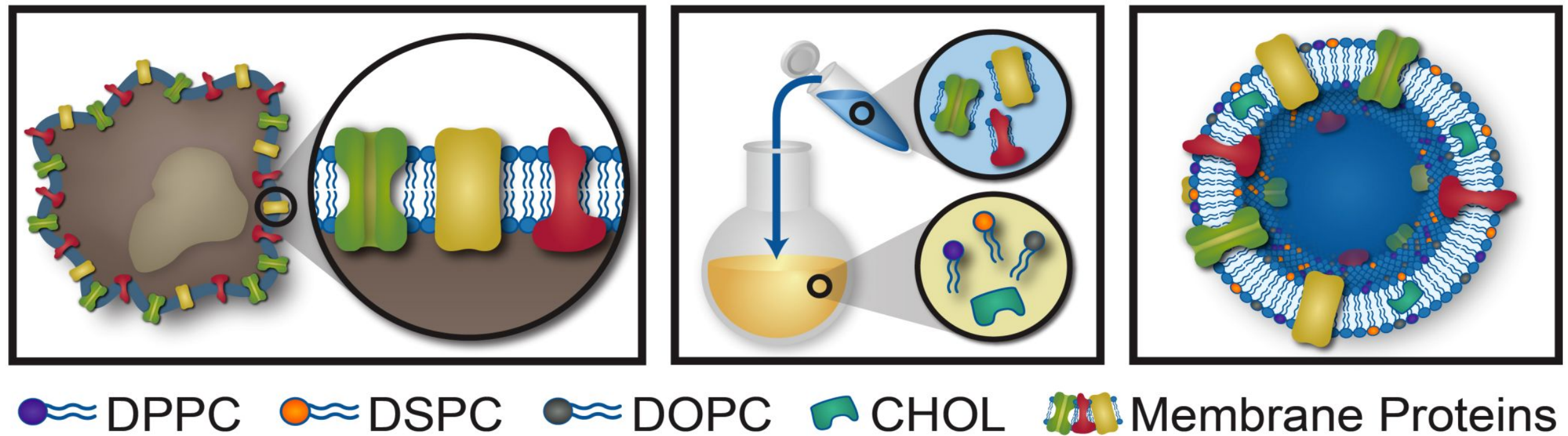


HIDING UNDER A MASK



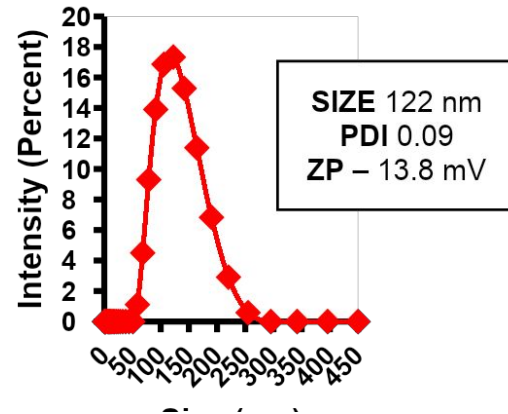
LEUKOSOMES

LEUKOSOMES ASSEMBLY: FROM A CELL TO A TARGETING NANOPARTICLE

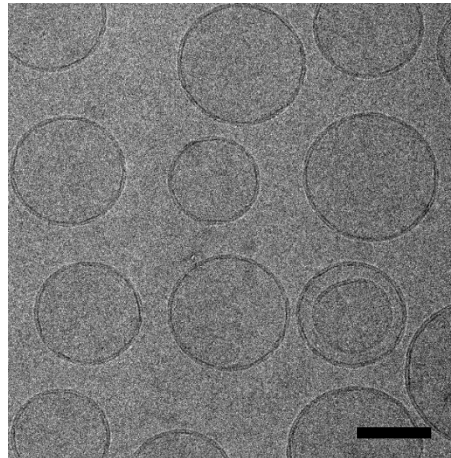


LEUKOSOMES

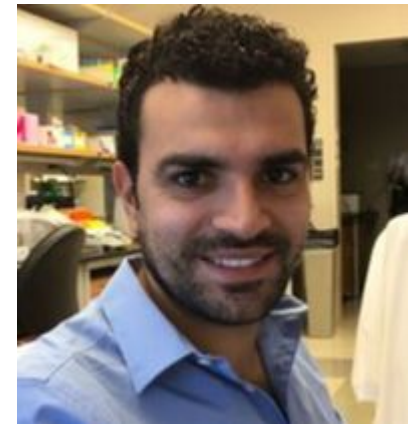
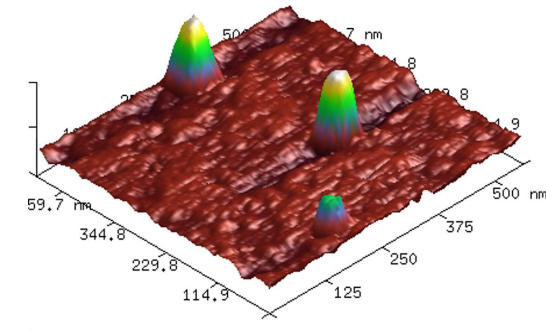
DLS



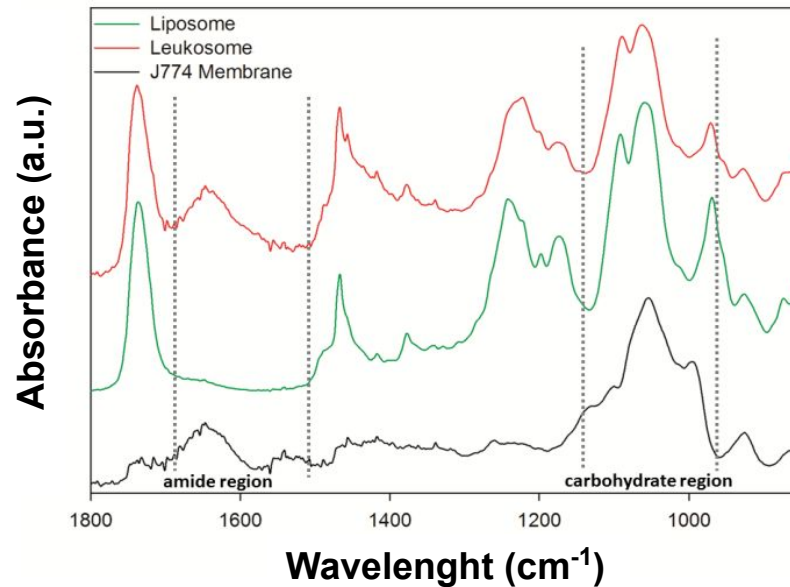
cryoEM analysis



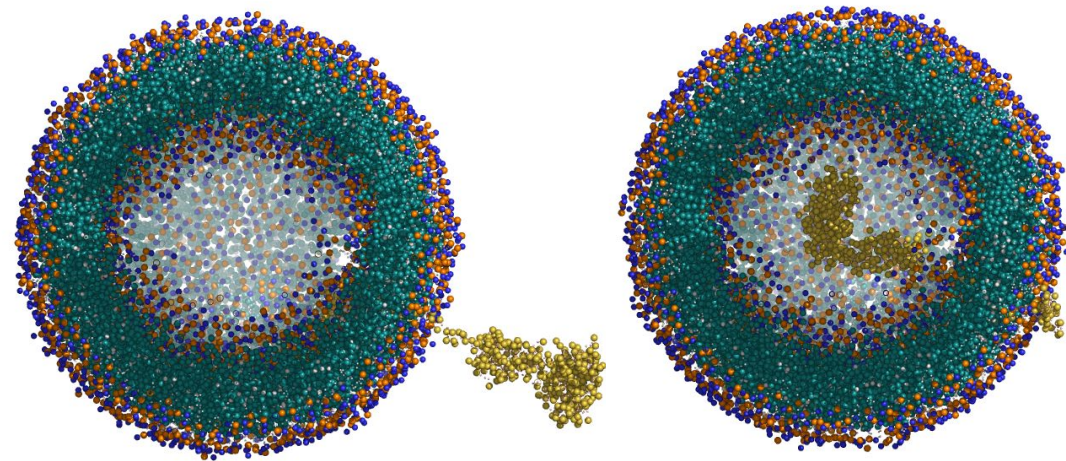
AFM



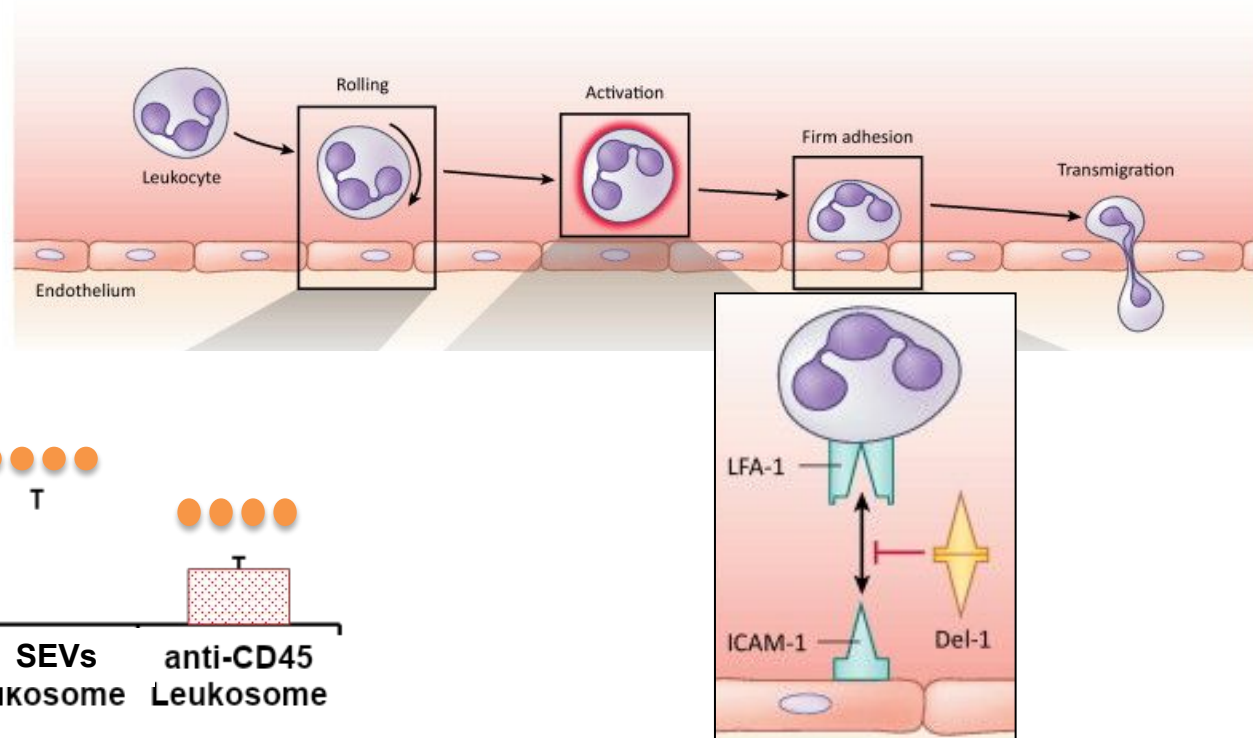
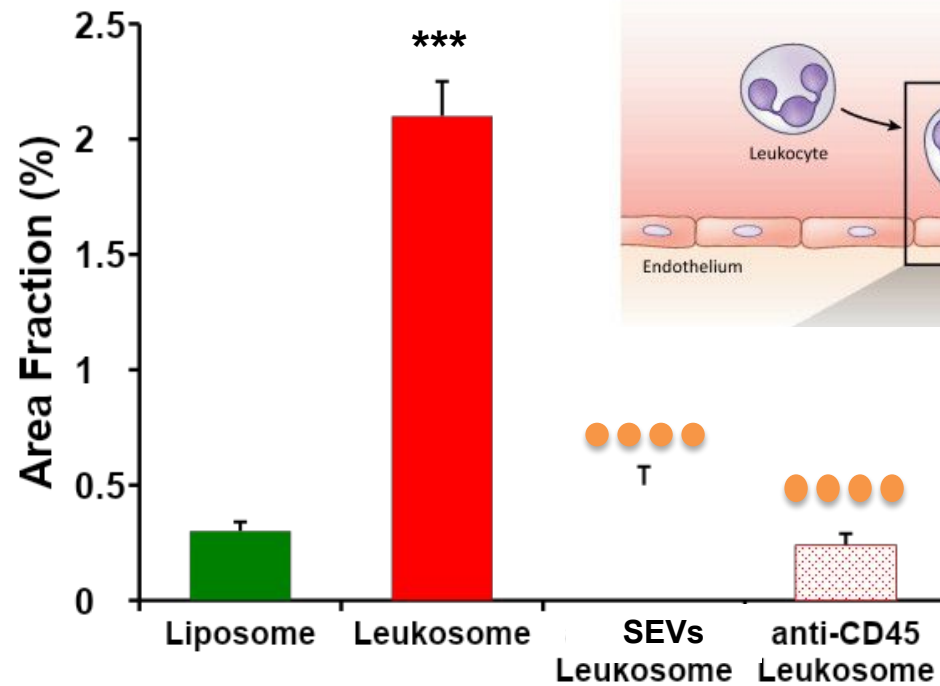
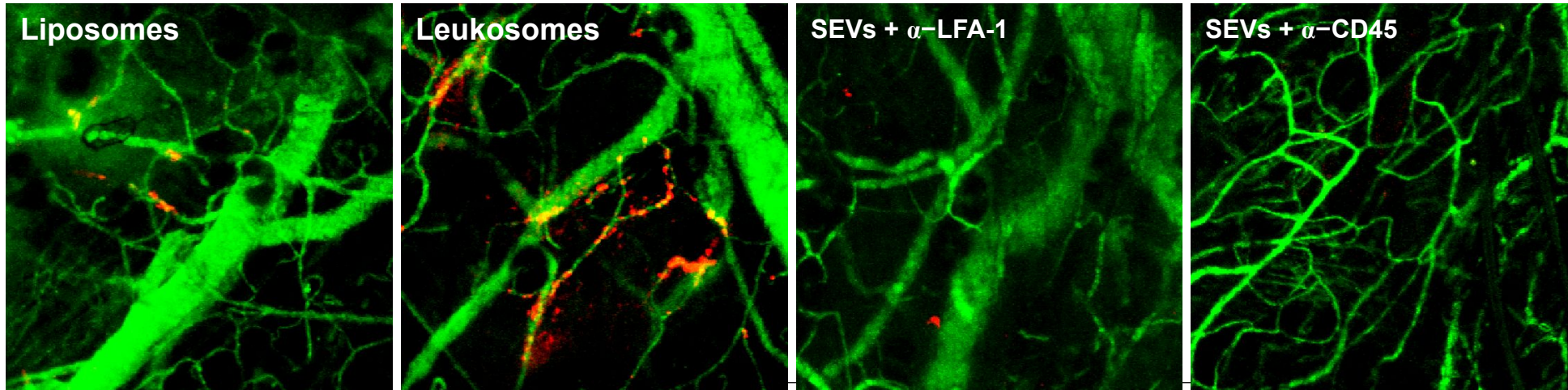
FTIR

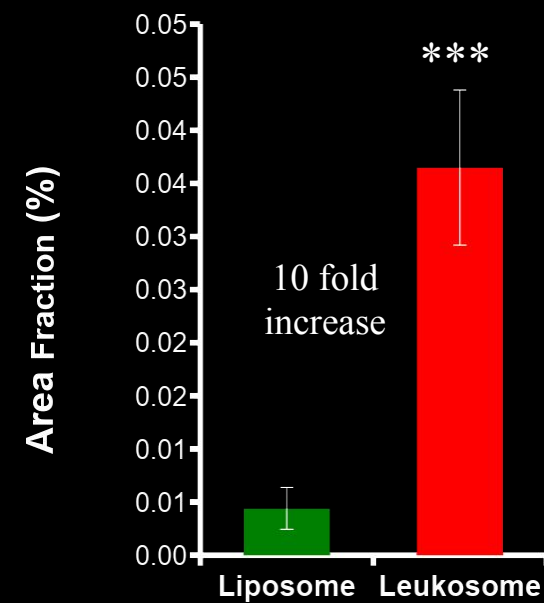
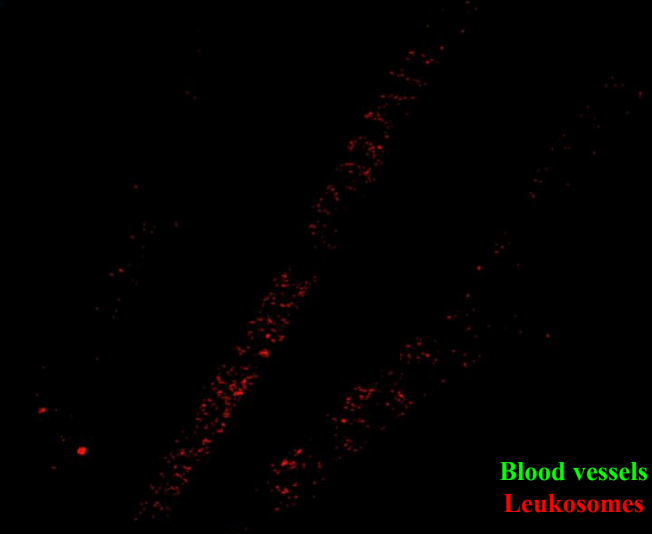
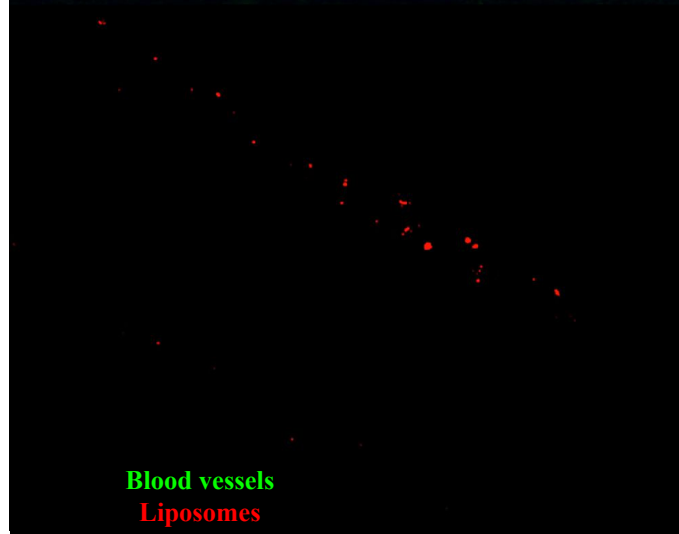
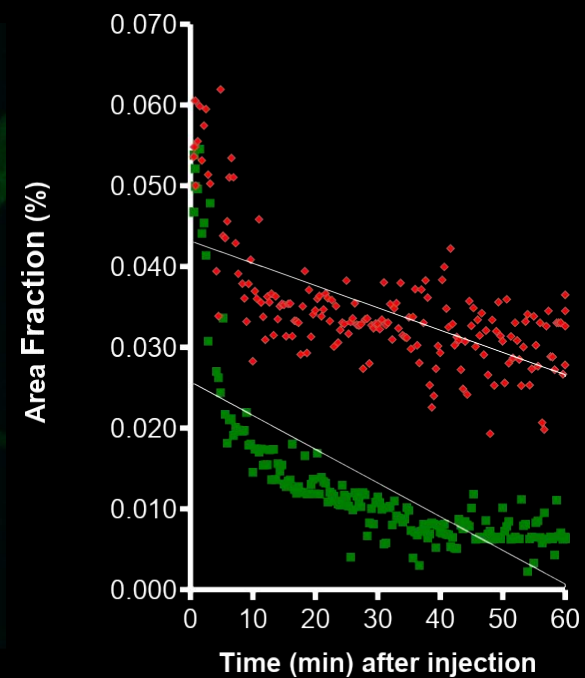
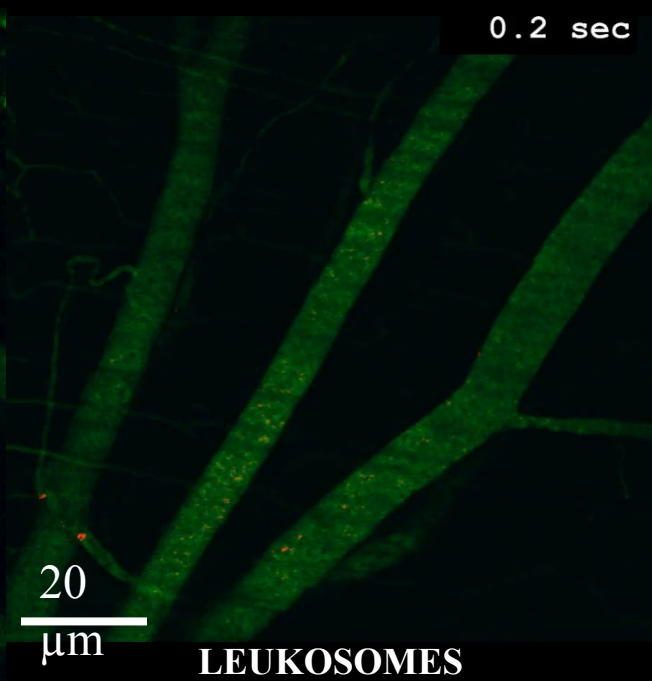
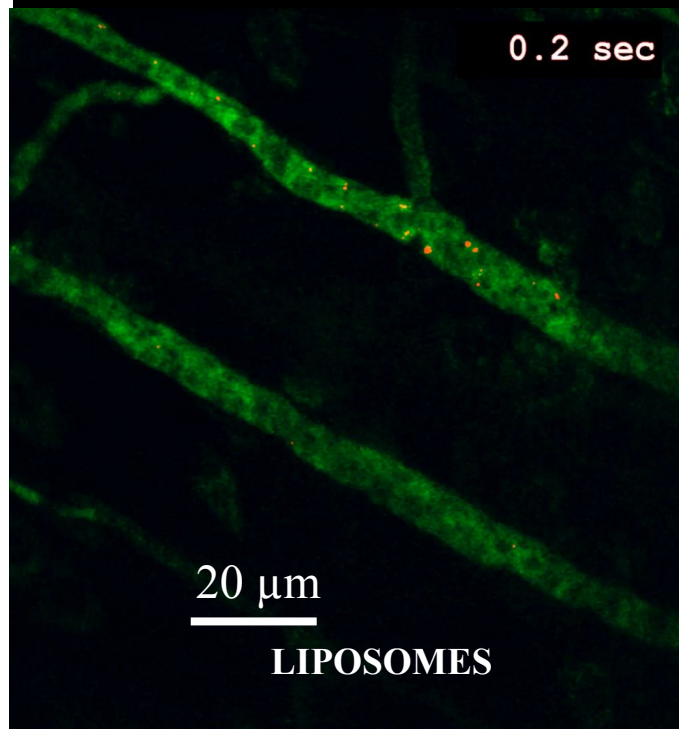


PROTEIN ORIENTATION



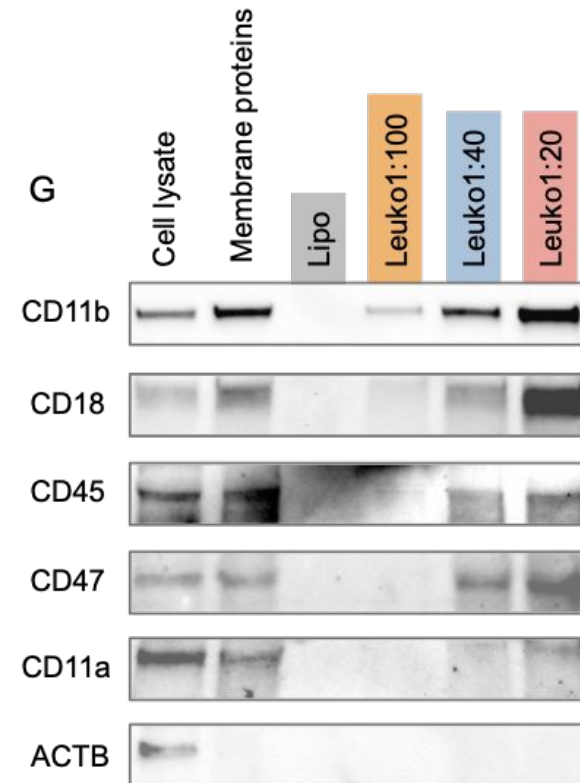
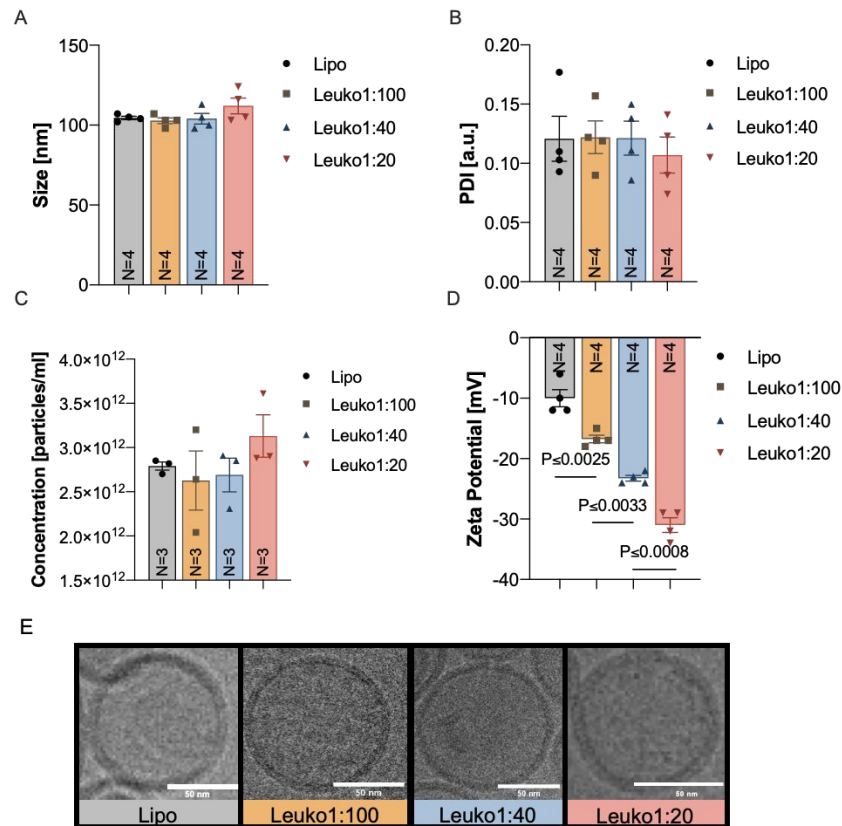
TARGETING MECHANISMS



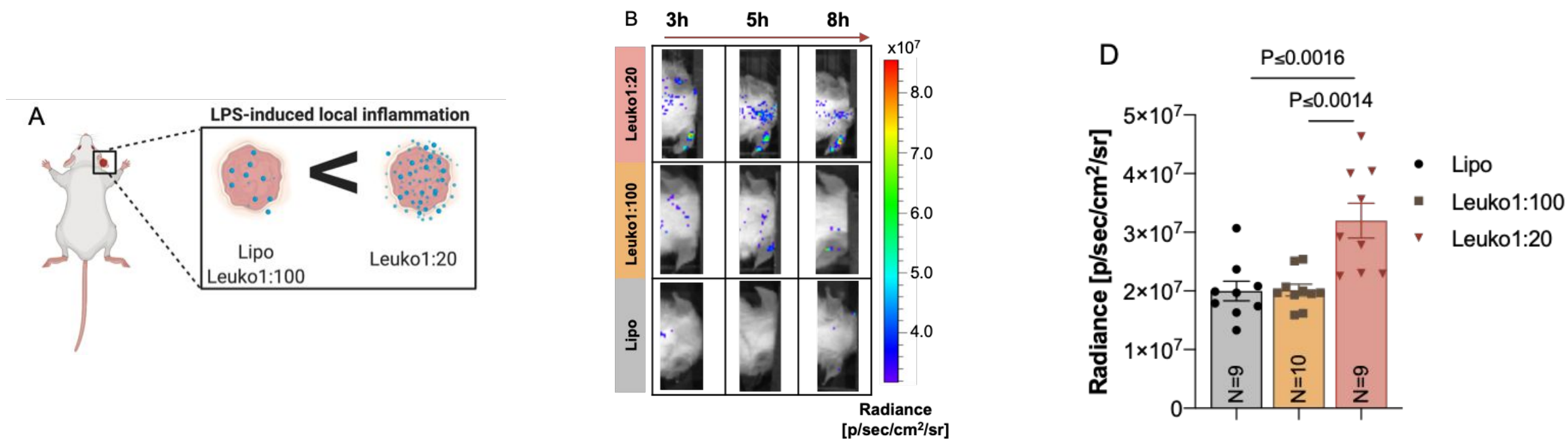




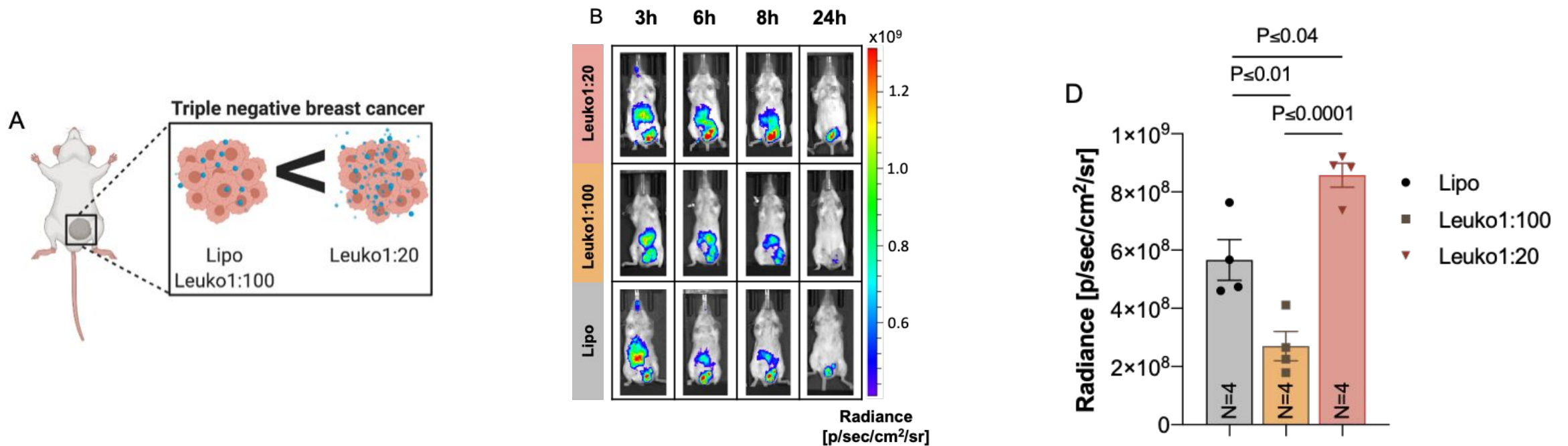
The physiochemical effect of lipids to proteins ratio on leukosomes

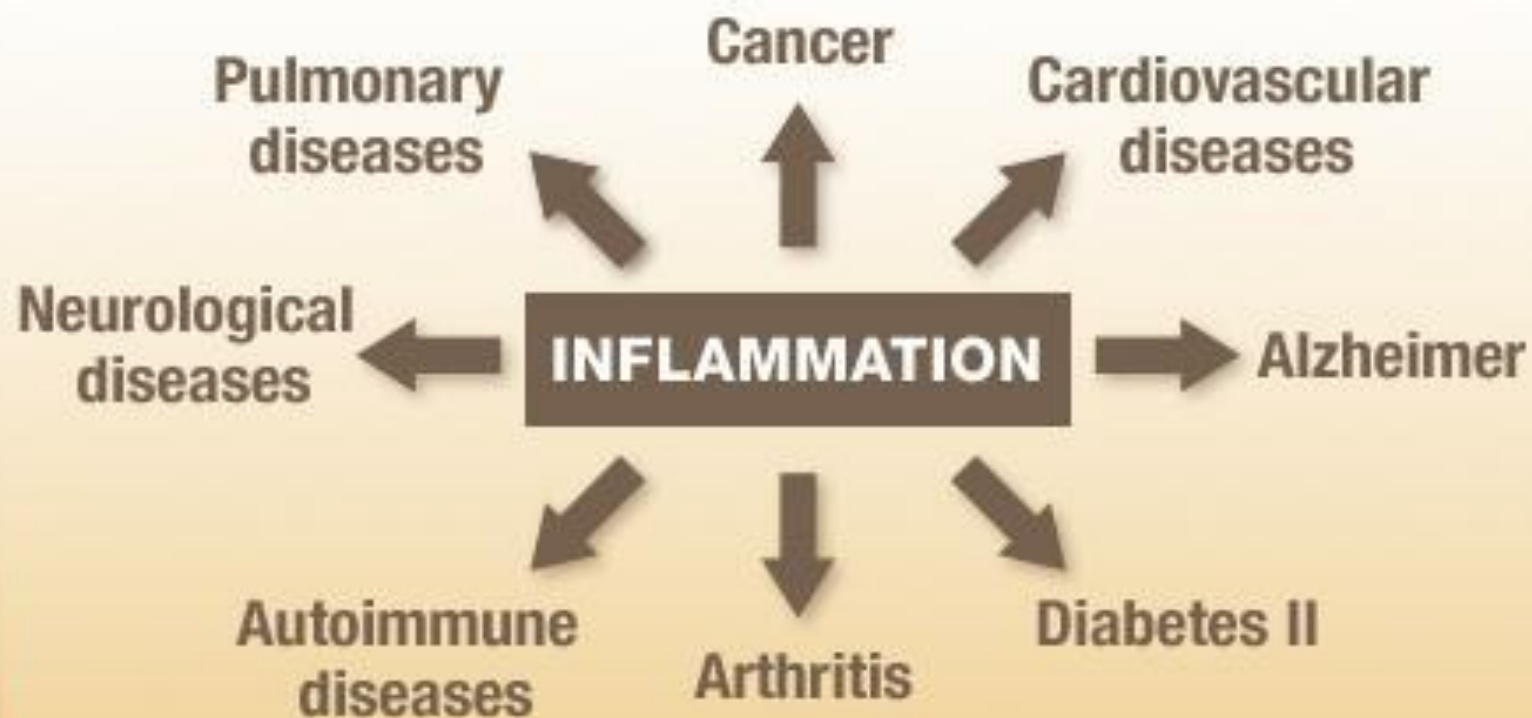


In vivo targeting of NP in LPS induced local inflammation



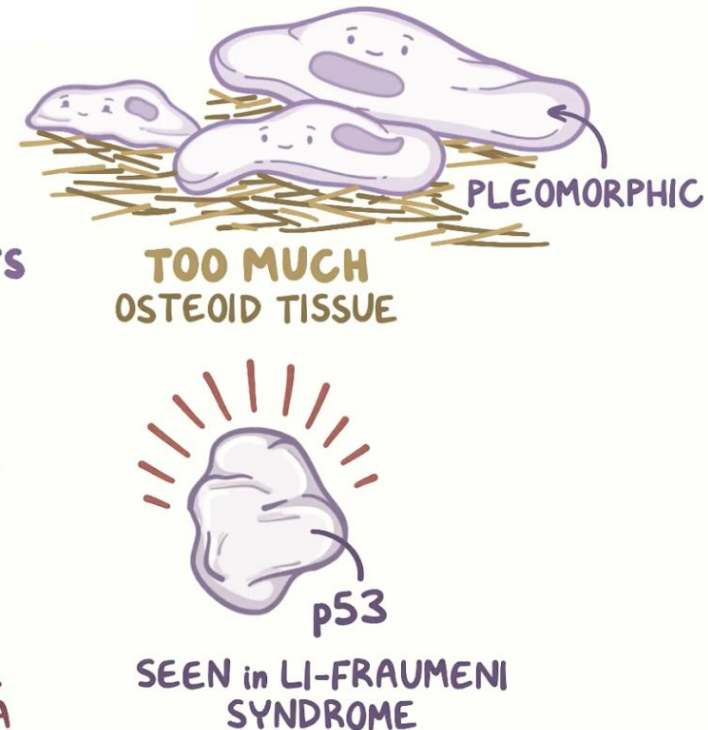
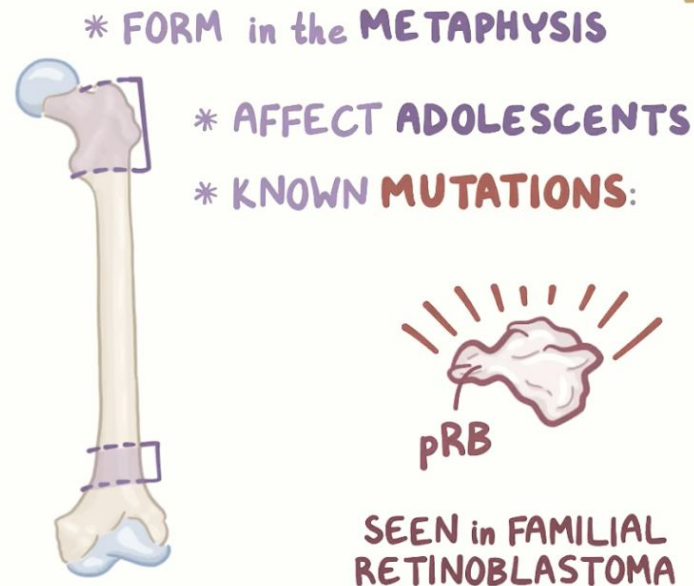
In vivo targeting of NP in triple negative breast cancer

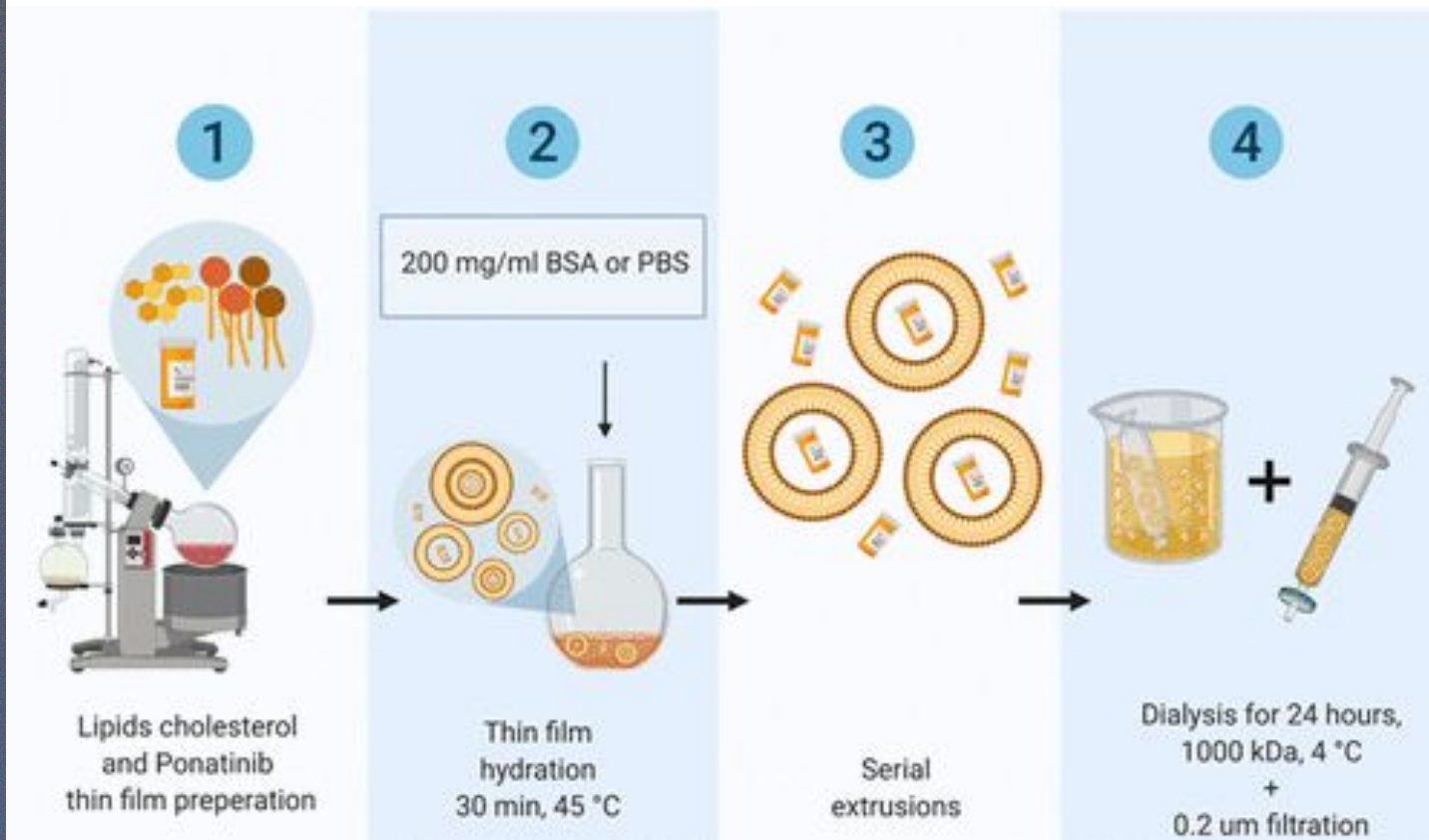
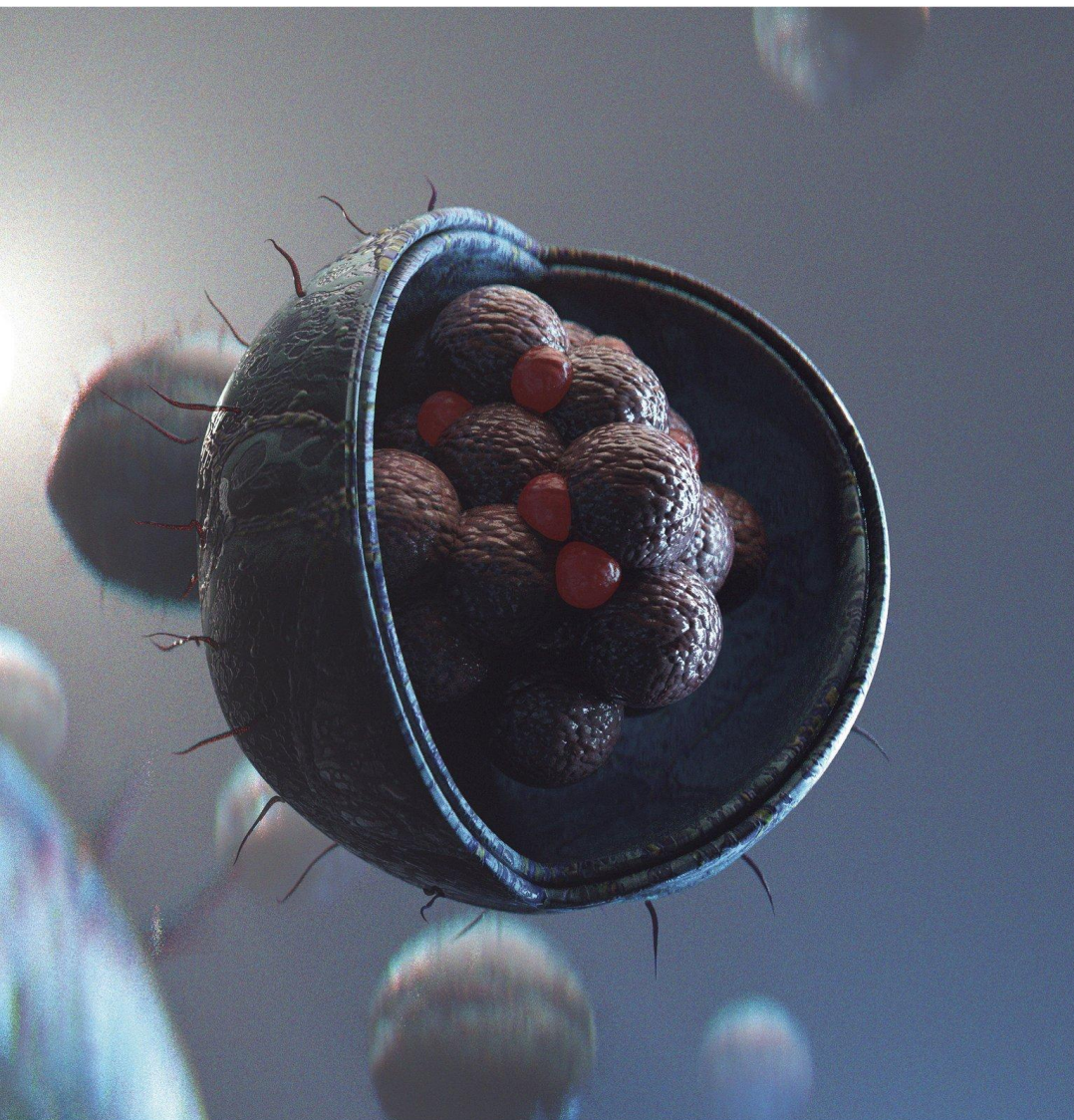




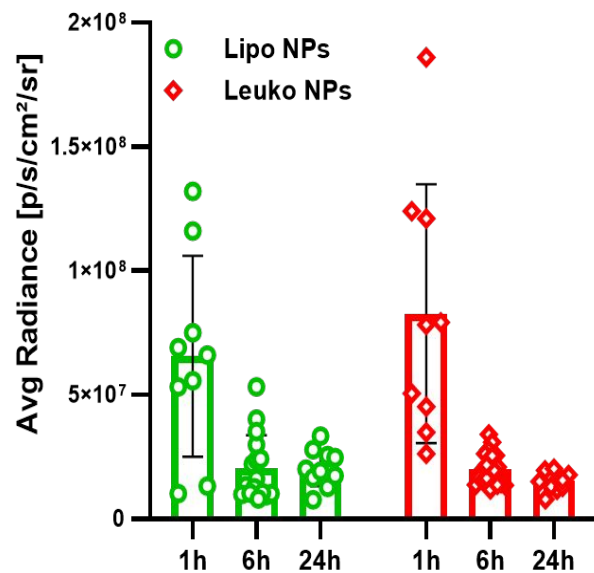
- Osteosarcoma (OS) arises from primitive mesenchymal bone forming cells.
- It is the **second highest cause of cancer-related death**.
- The **5-years survival** rate is still less than 70%.
- **Absence** of specific molecular targets.

OSTEOSARCOMA



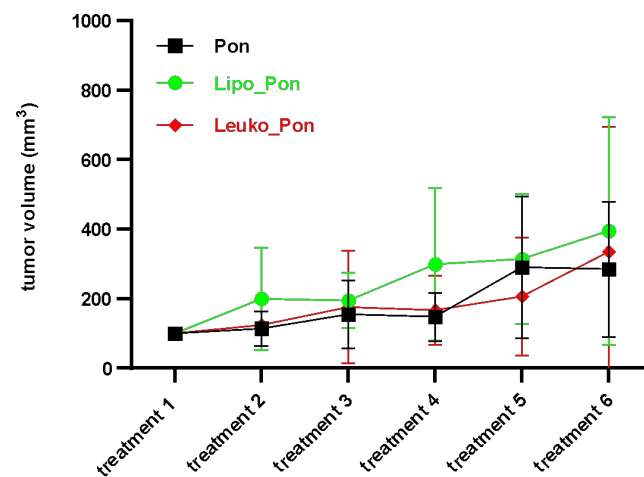
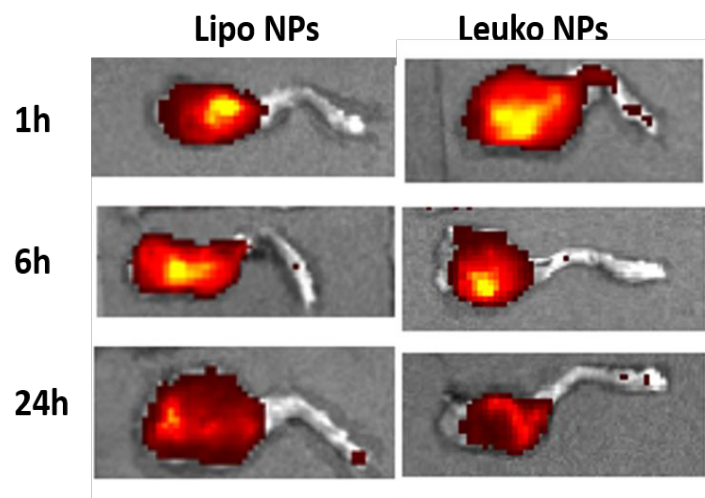


Primary Tumor



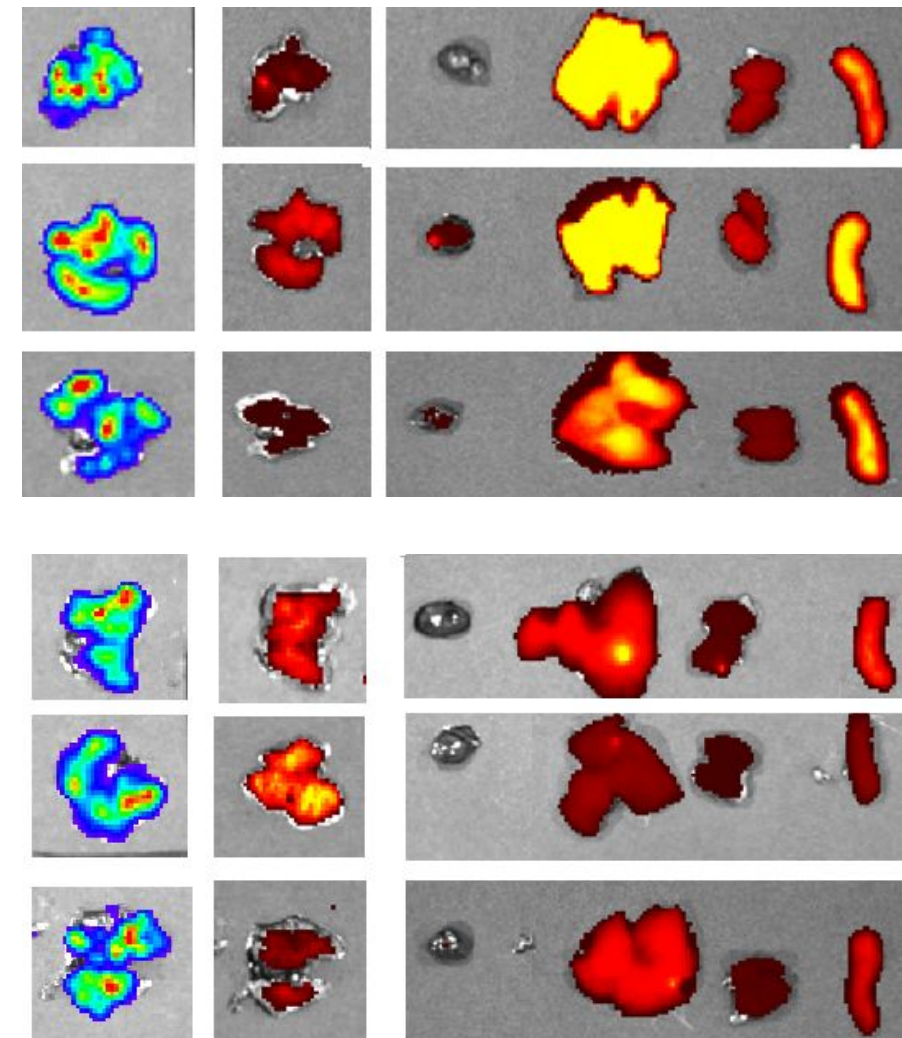
Left

Right + Tumor



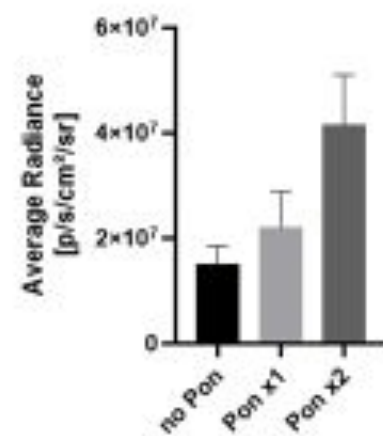
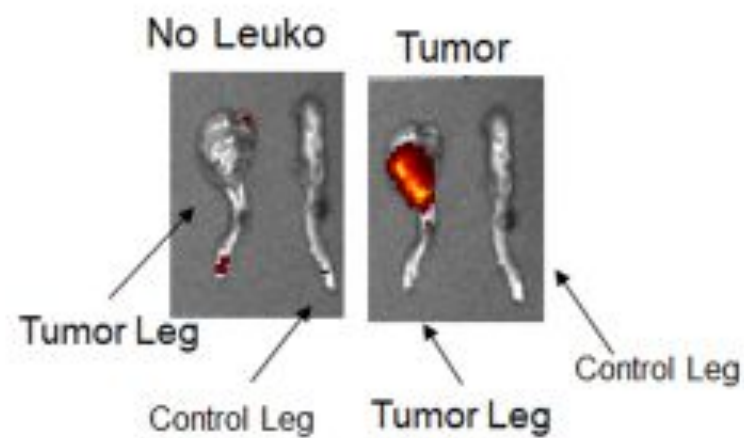
Lungs Mets

Lungs



Lipo
3h

Leuko
3h



Control group

Ponatinib group

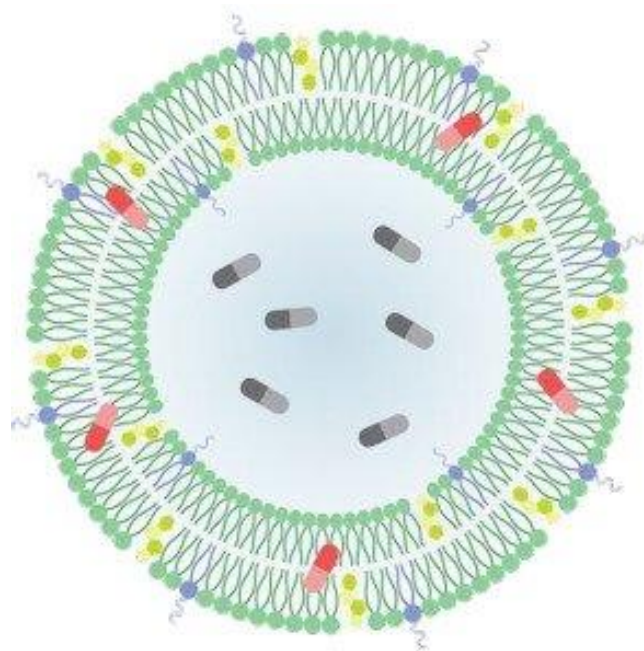
Leuko
DiD
NP 1h

Tumor
mCherry

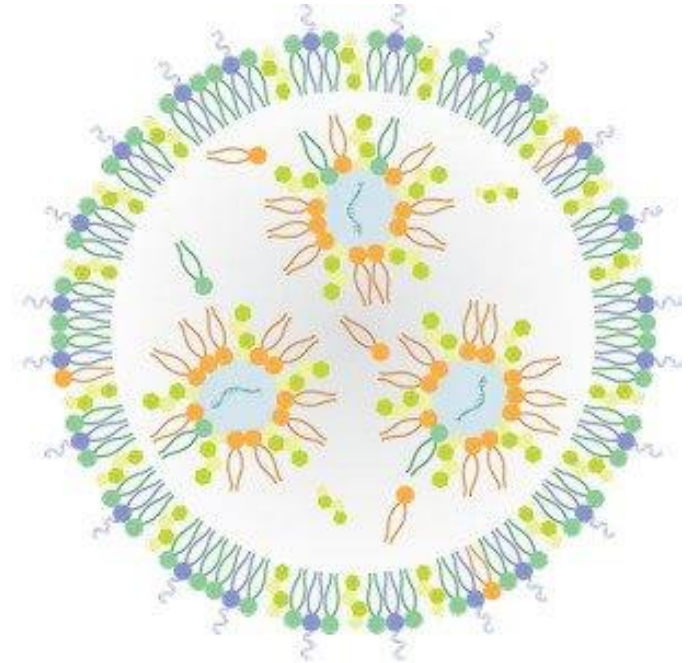
Mice analyzed
by IVM

Mice analyzed
By IVM

Leukosome to
Leuko-LNP: is
this even
possible?



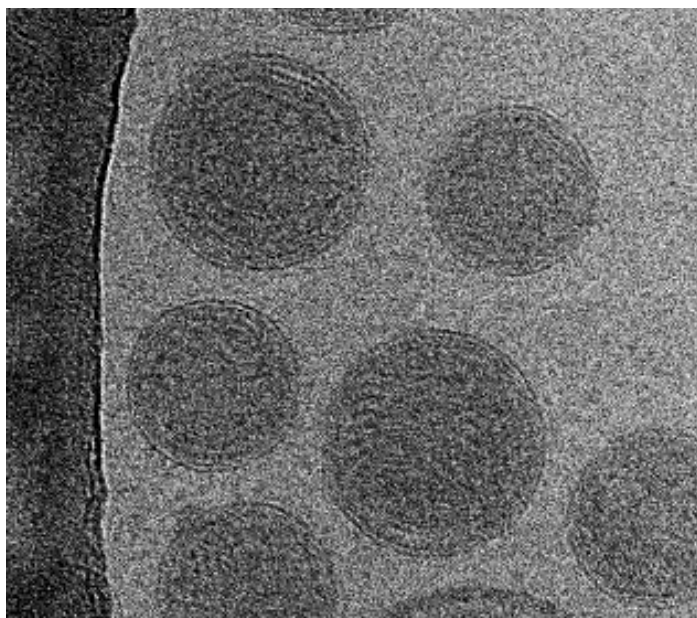
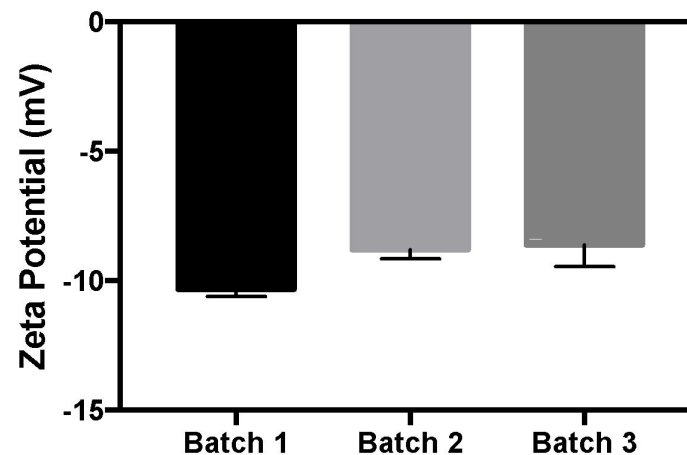
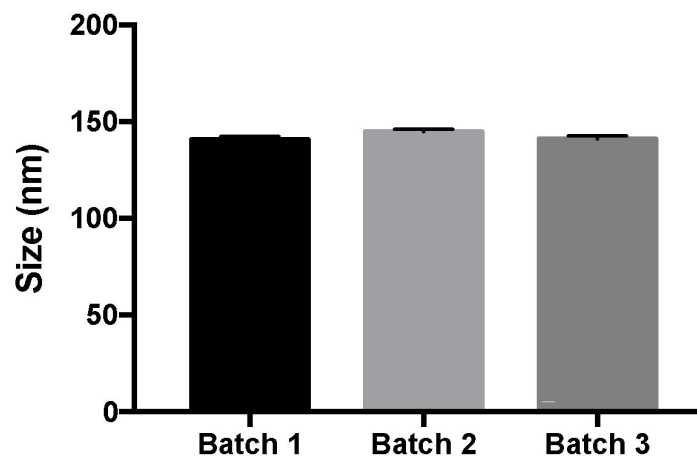
Liposome



Lipid Nanoparticle

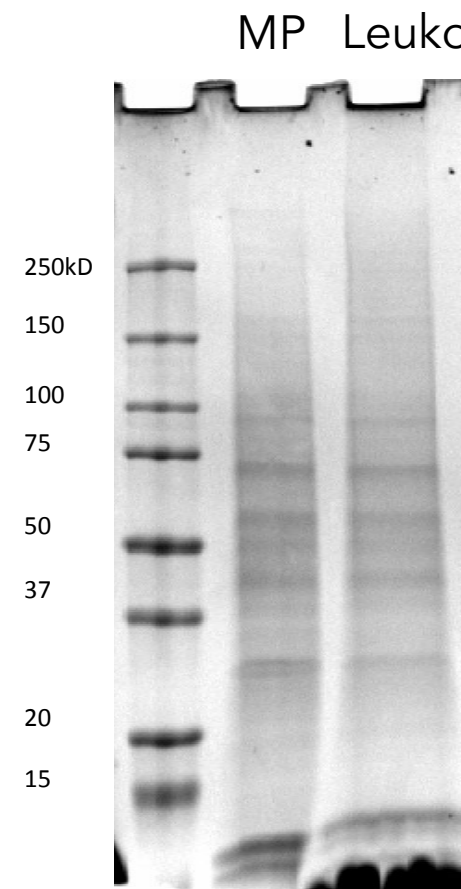


Physicochemical Properties



	siRNA amount loaded	Encapsulation Efficiency
Batch 1	74.2 ug/mL	49.3%
Batch 2	80.8 ug/mL	53.9%
Batch 3	86.1 ug/mL	57.4%

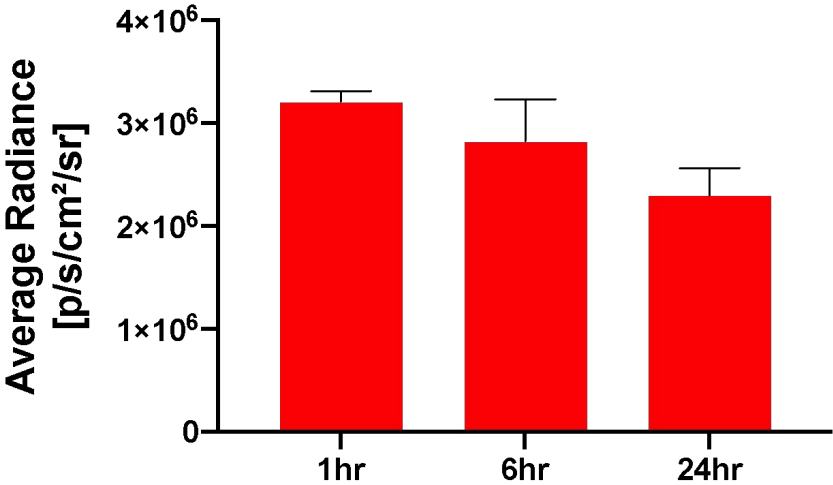
Proteins on particles



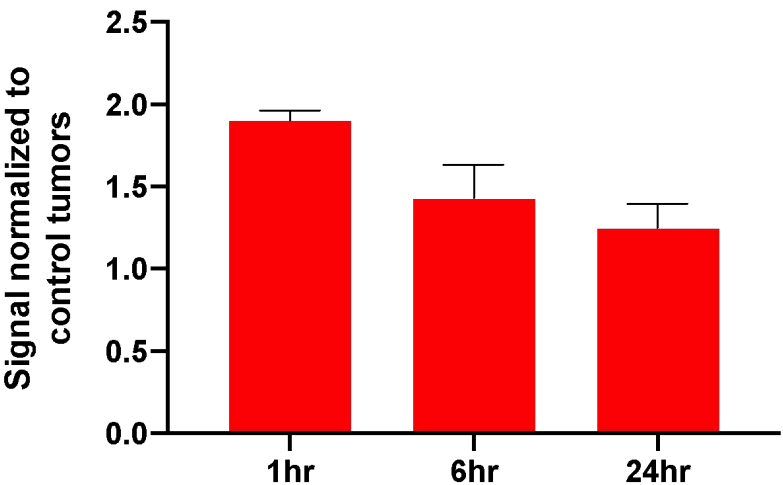
MP = extracted membrane protein
Leuko = Leukosomes

Leuko-siRNA: In vivo targeting - TNBC

Leukosomes in 4T1 tumors
Raw signal value



Leukosomes in 4T1 tumors
Raw signal value / control signal

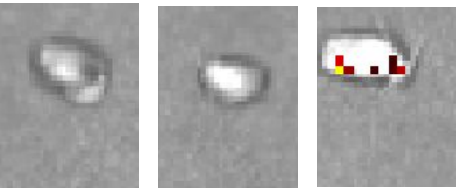
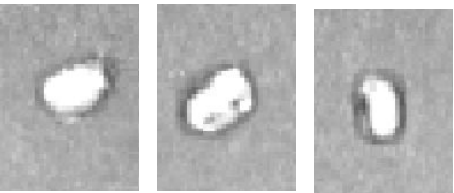


1 hour

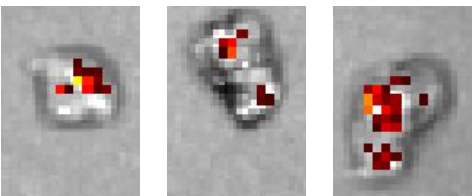
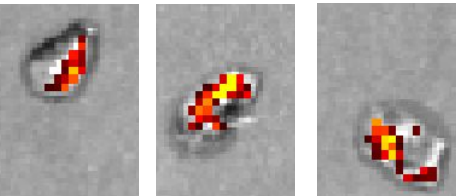
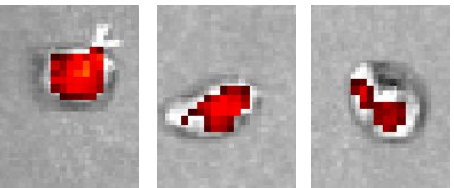
6 hours

24 hours

Control

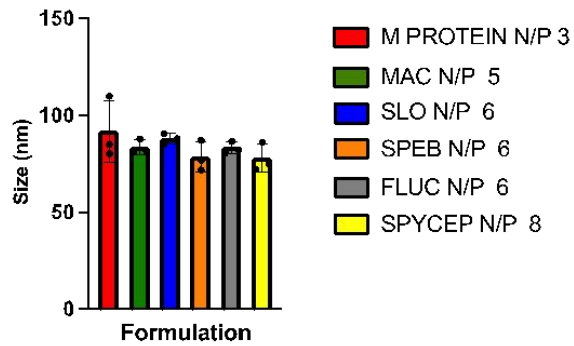


Leuko

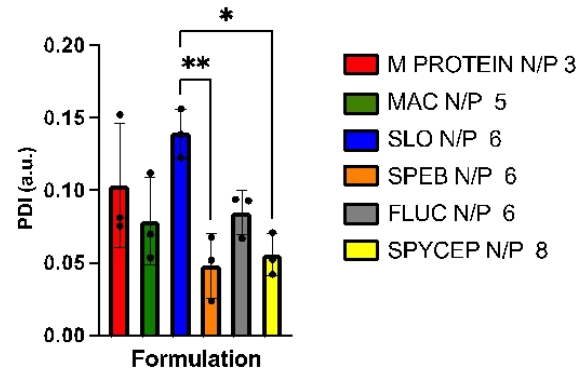




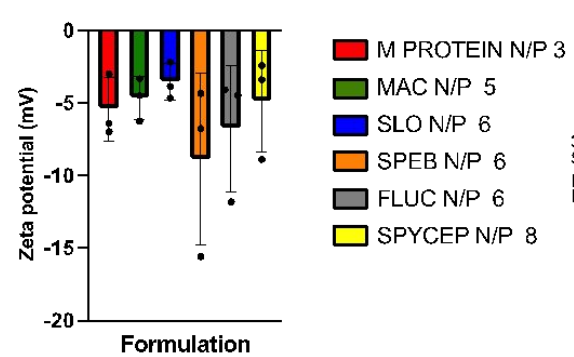
SIZE



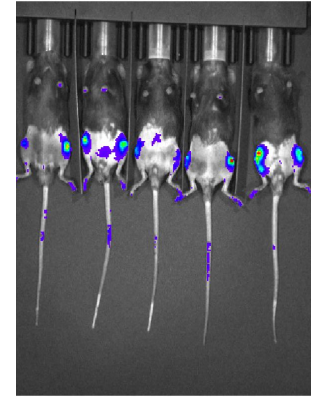
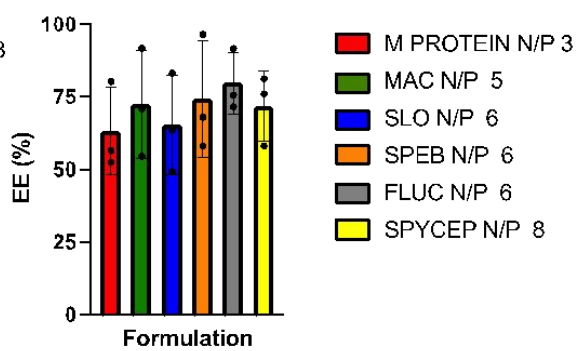
PDI



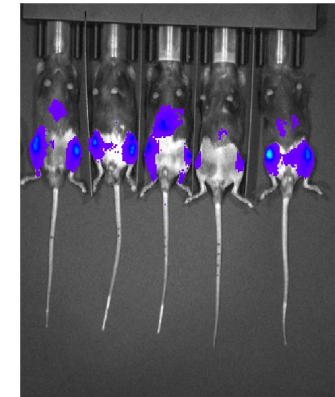
ZETA POTENTIAL



ENCAPSULATION EFFICIENCY

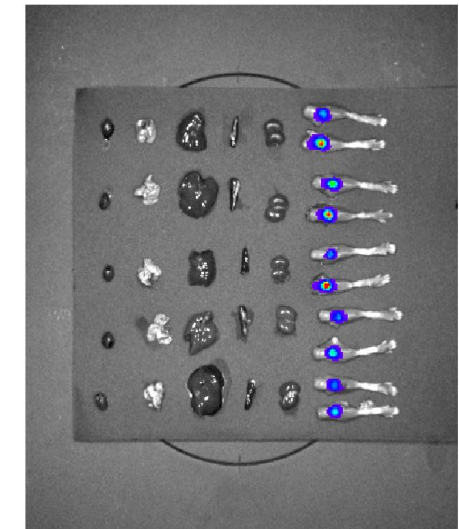
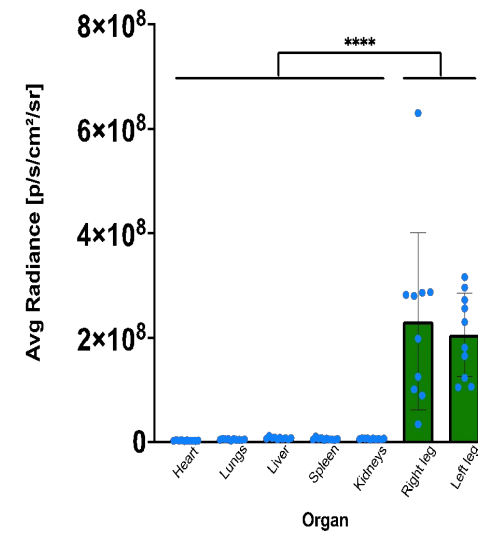


NPs Fluorescence

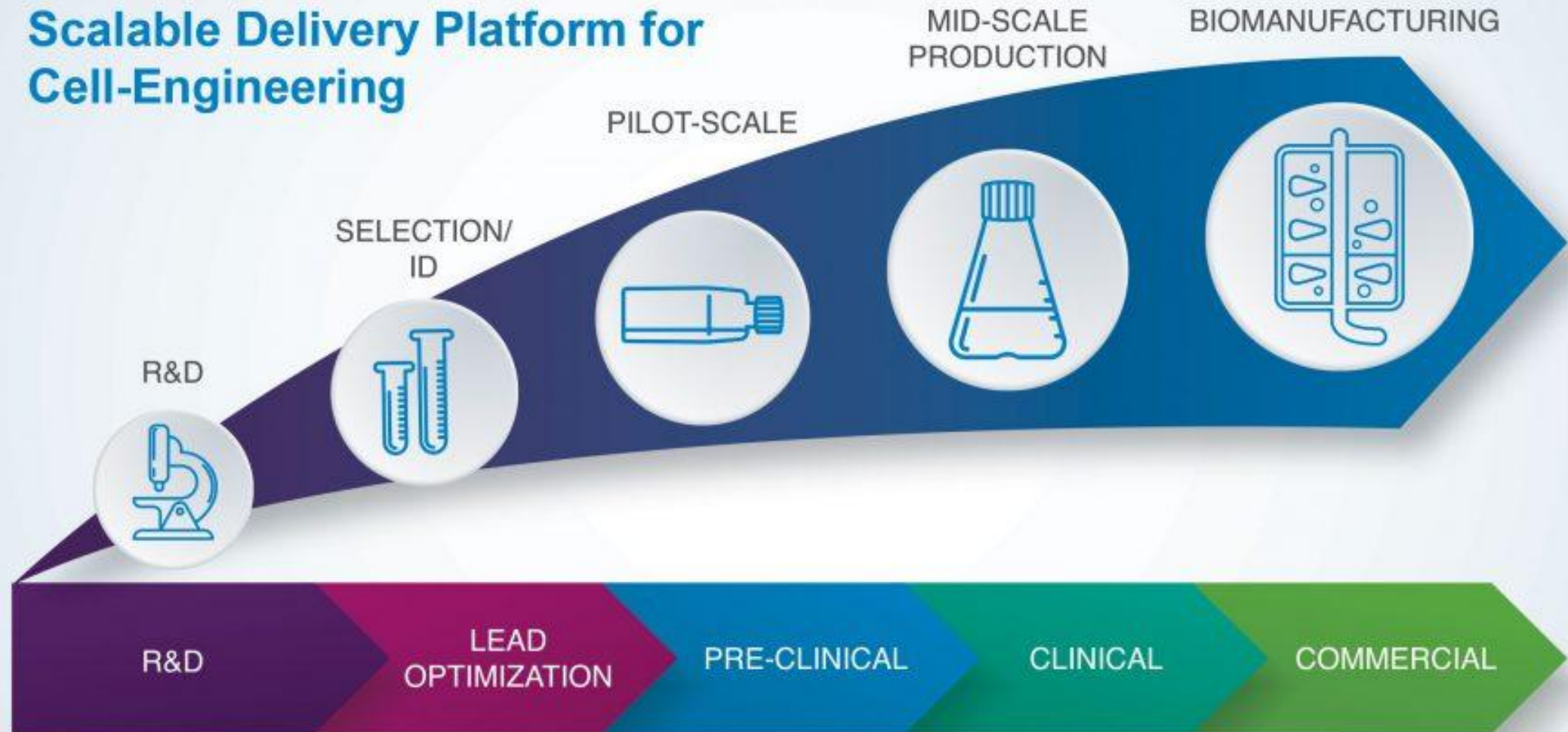


mRNA- Bioluminescence

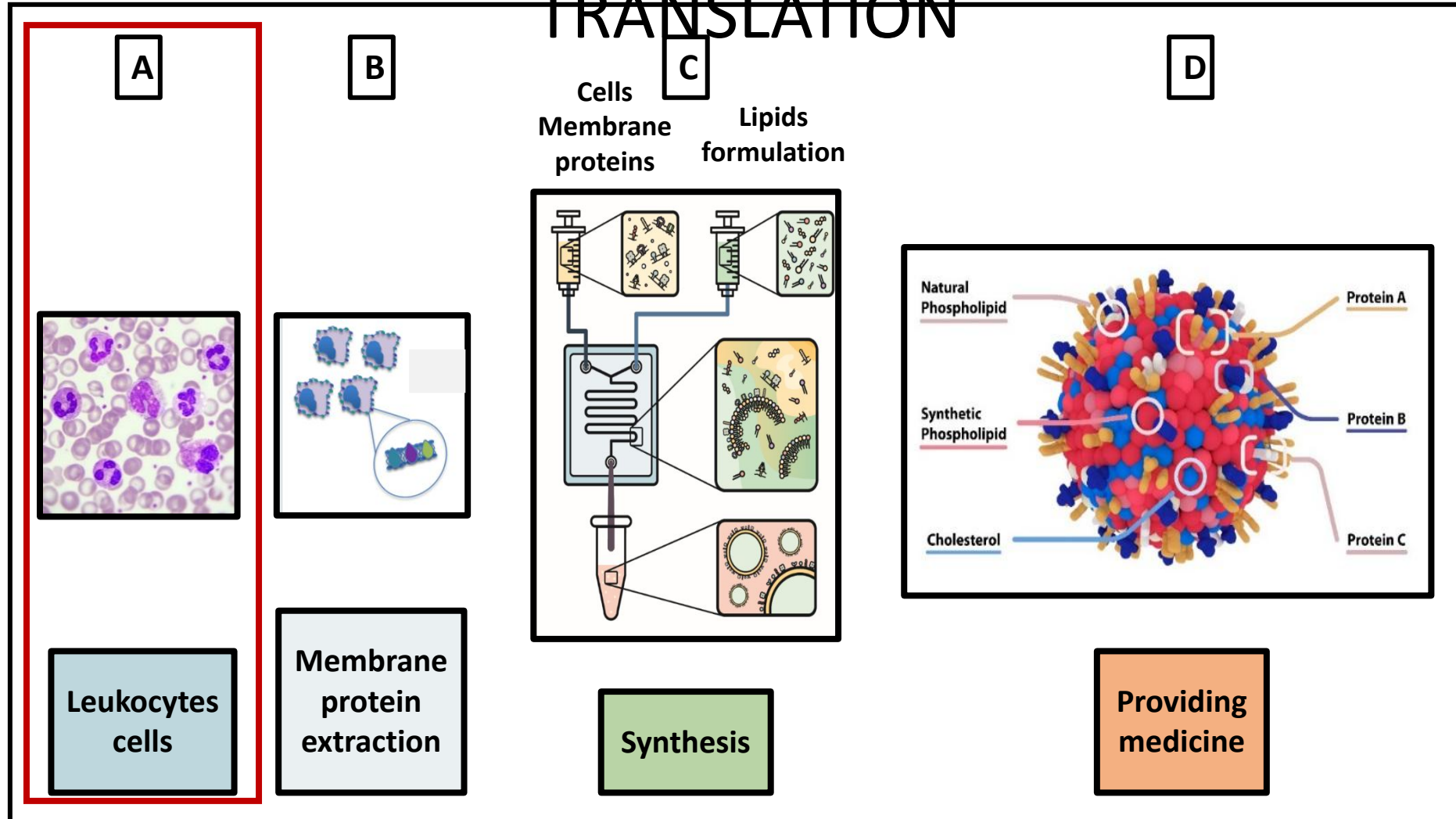
NP Biodistribution - 48h post-injection



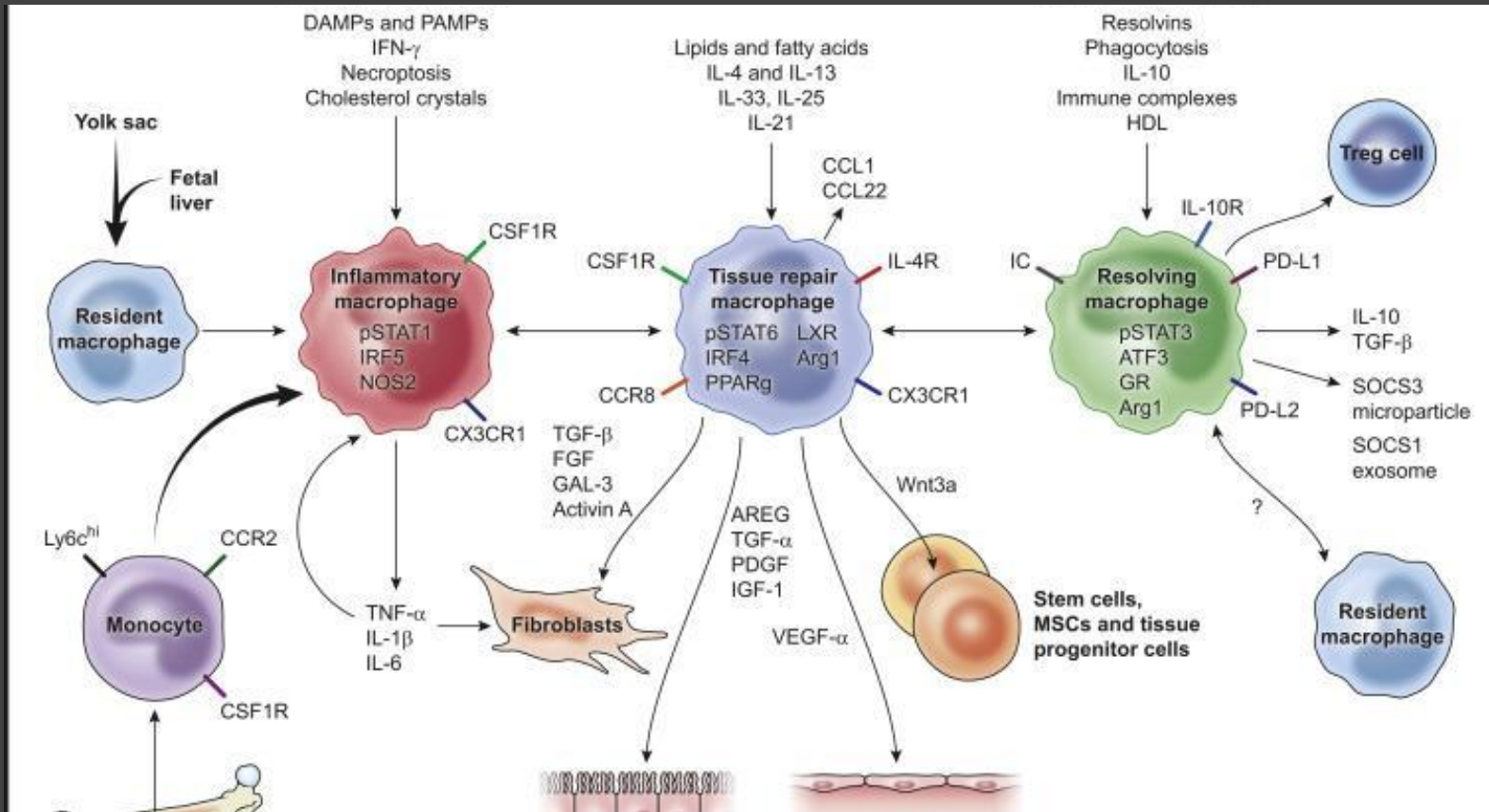
Scalable Delivery Platform for Cell-Engineering



Challenges: SCALABILITY & TRANSLATION

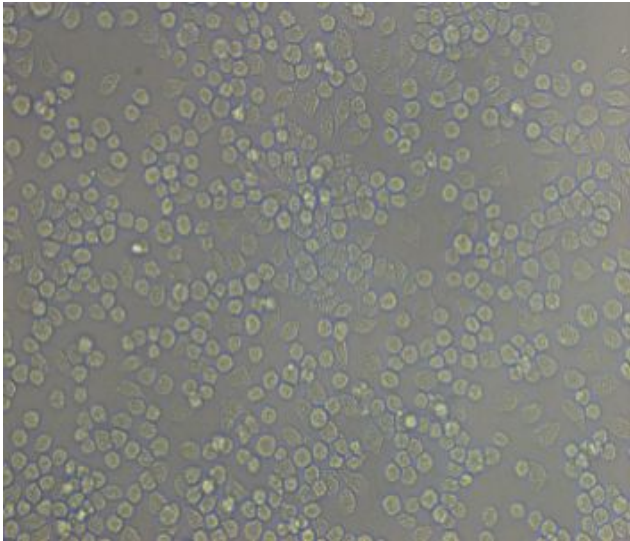


Cells

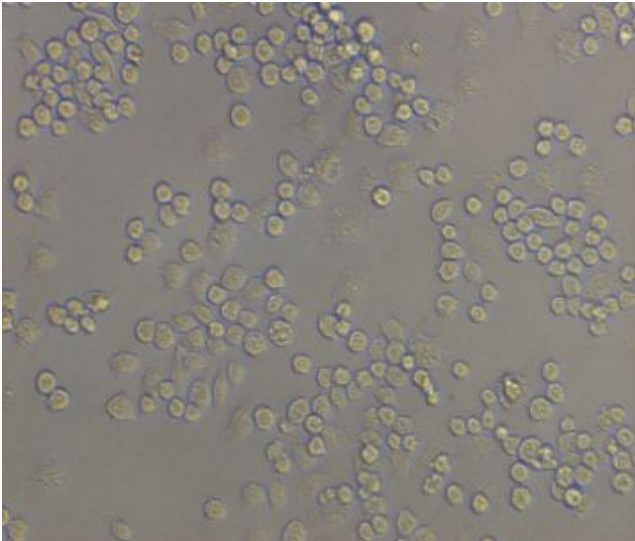




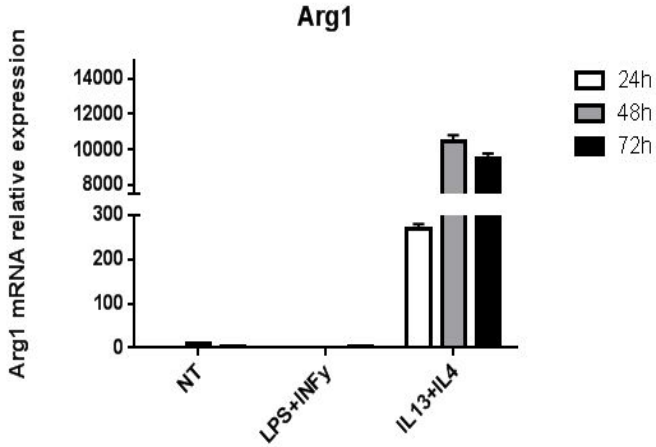
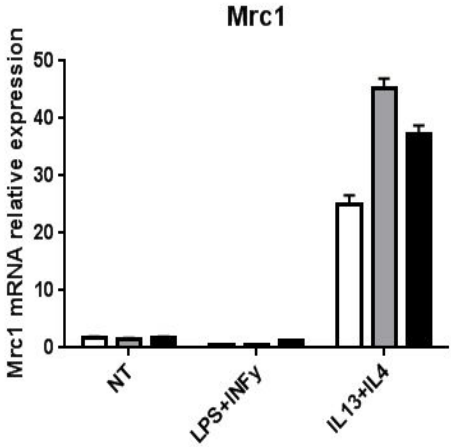
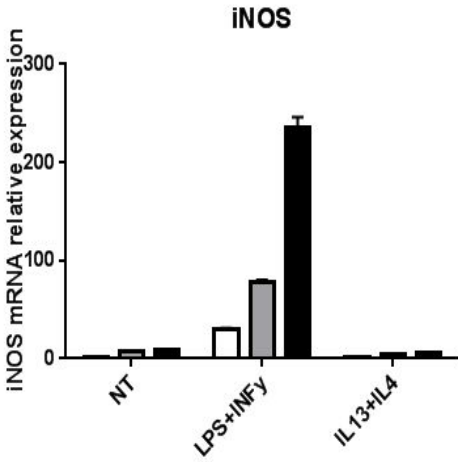
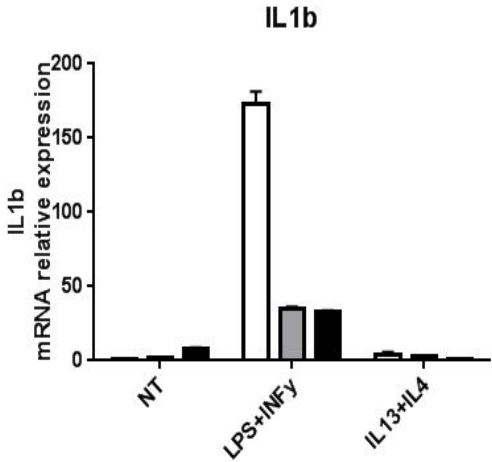
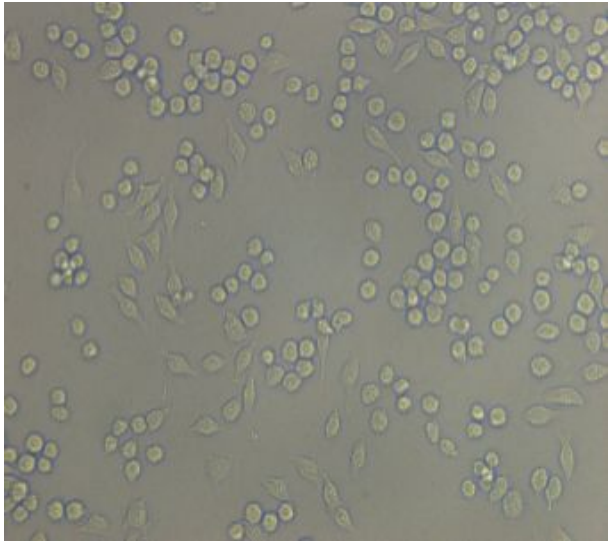
NT



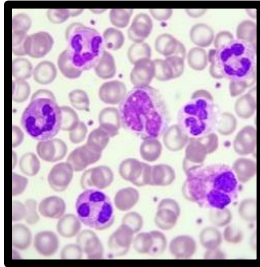
LPS+INF γ



IL13+IL4

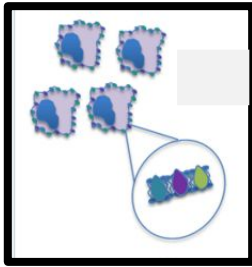


A



Leukocytes
cells

B

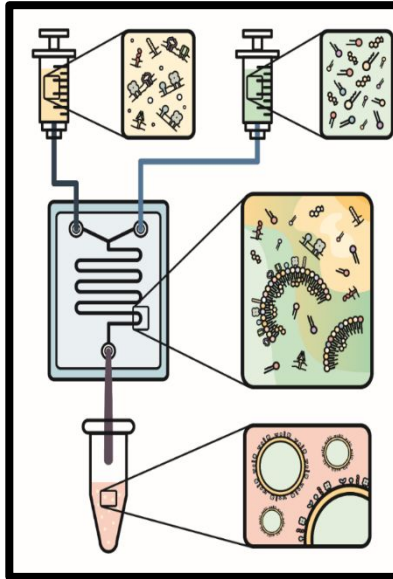


Membrane
protein
extraction

C

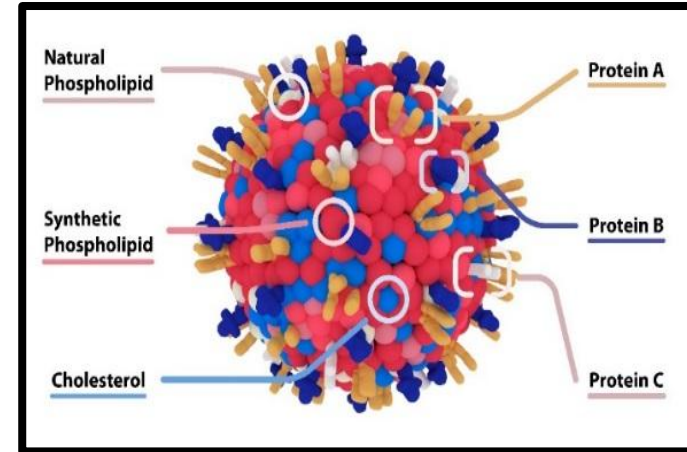
Cells
Membrane
proteins

Lipids
formulation



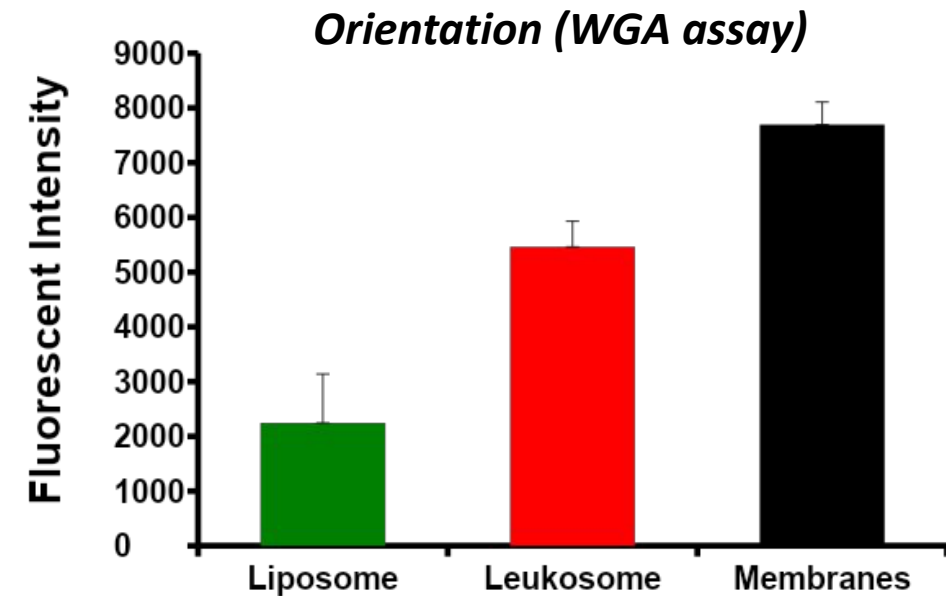
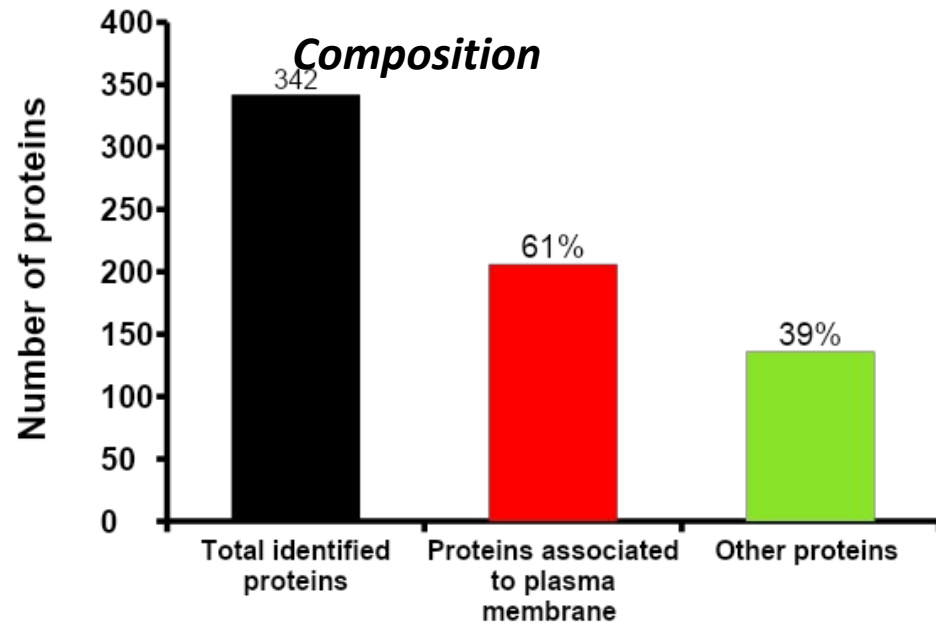
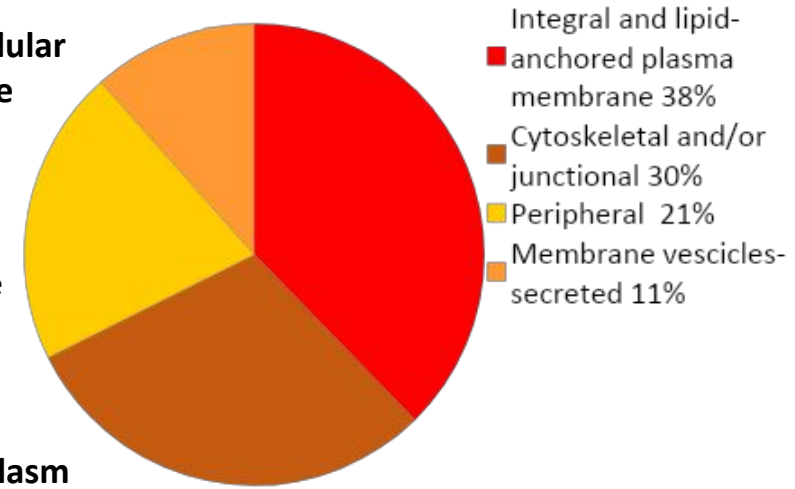
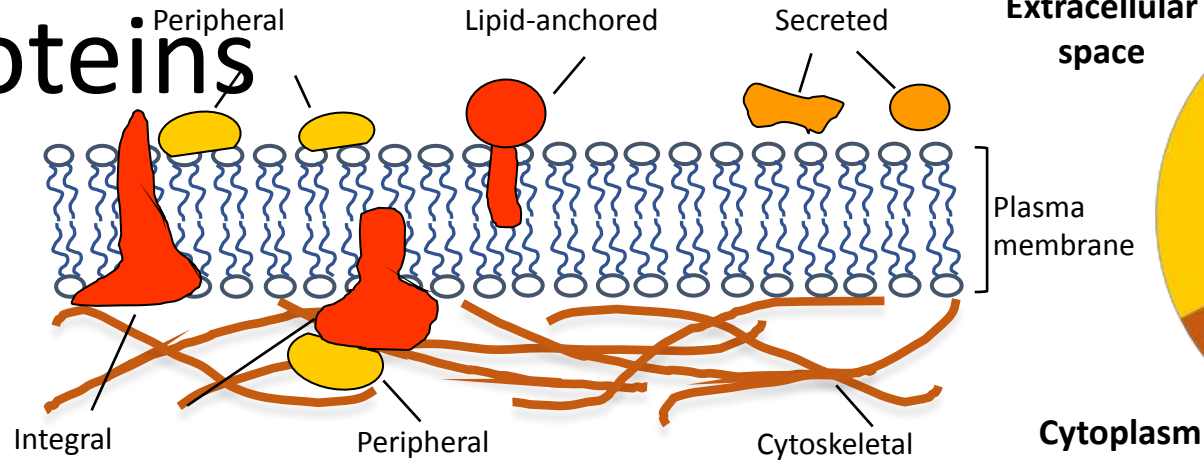
Synthesis

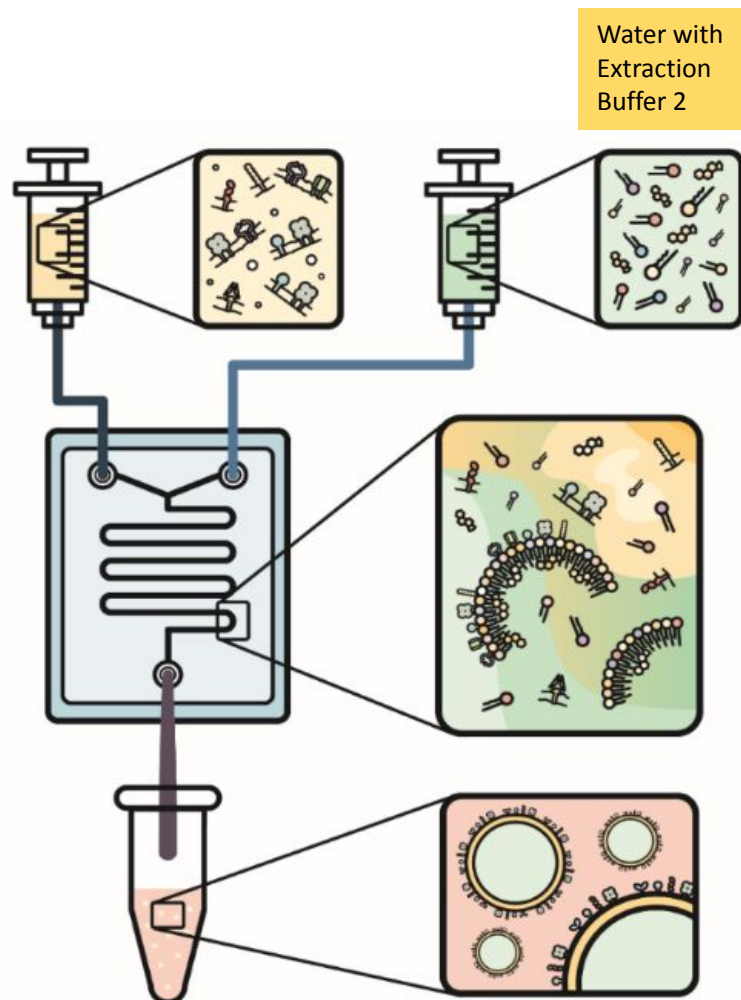
D



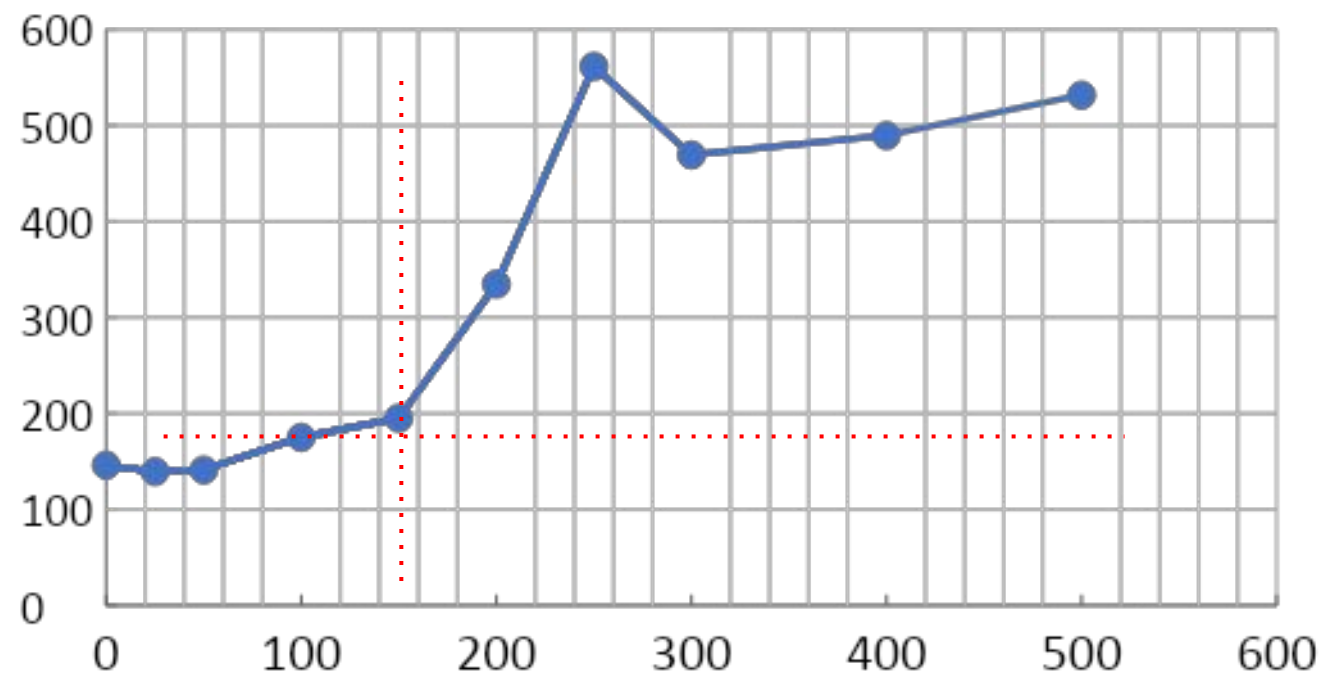
Providing
medicine

Membrane Proteins

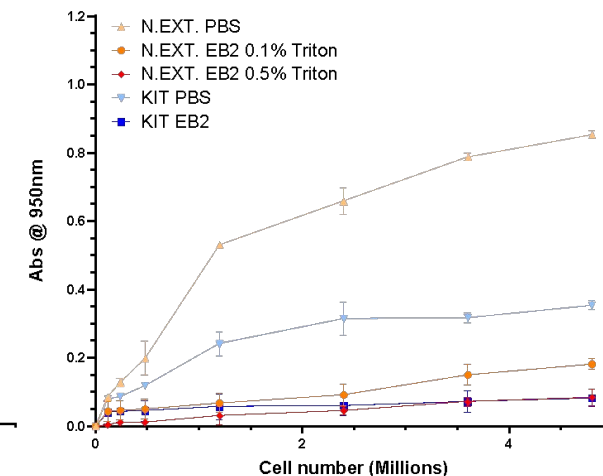
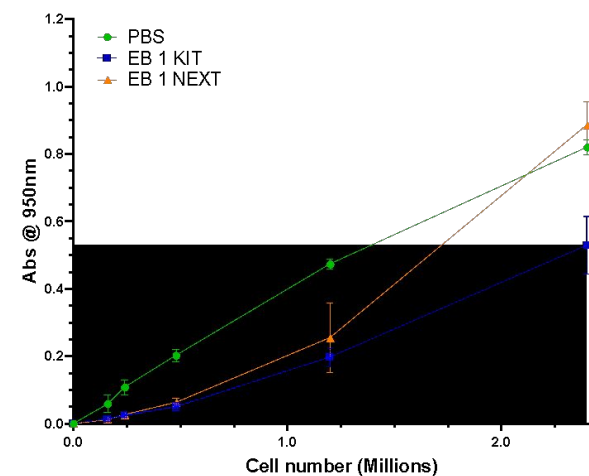
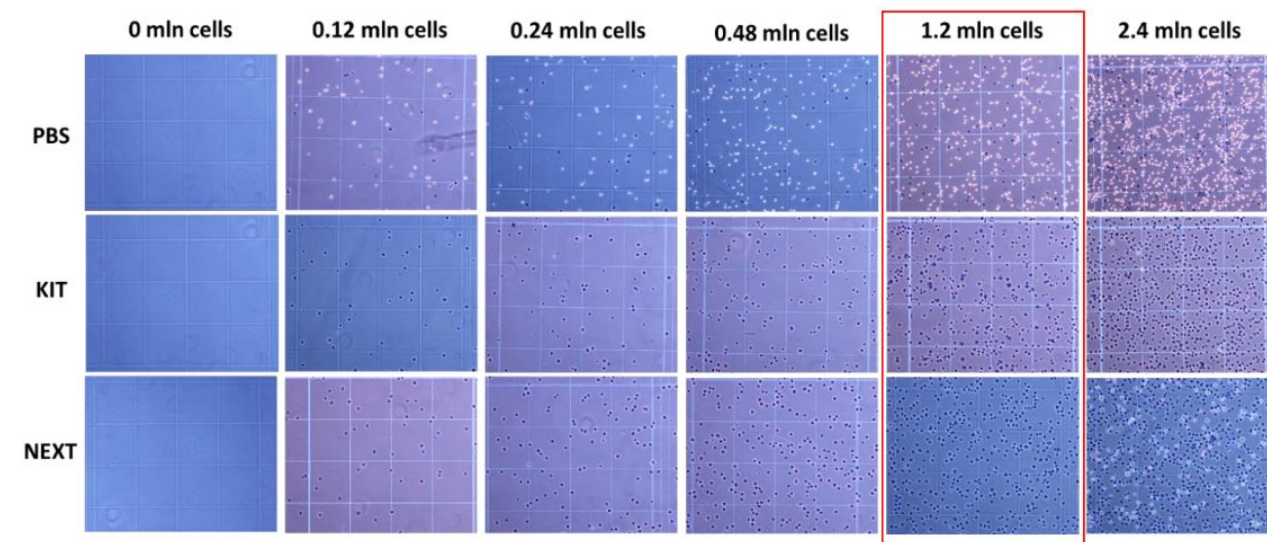
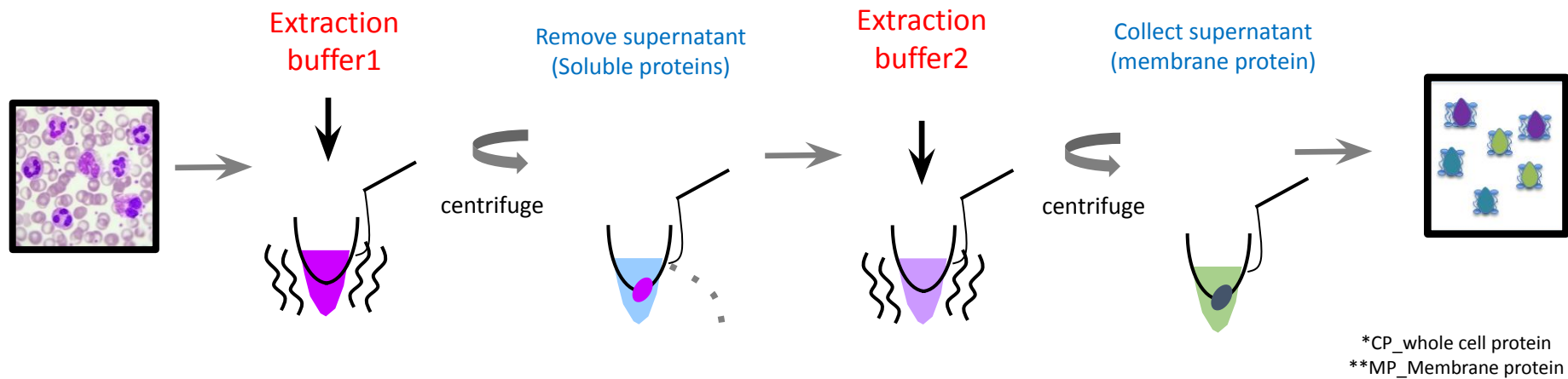




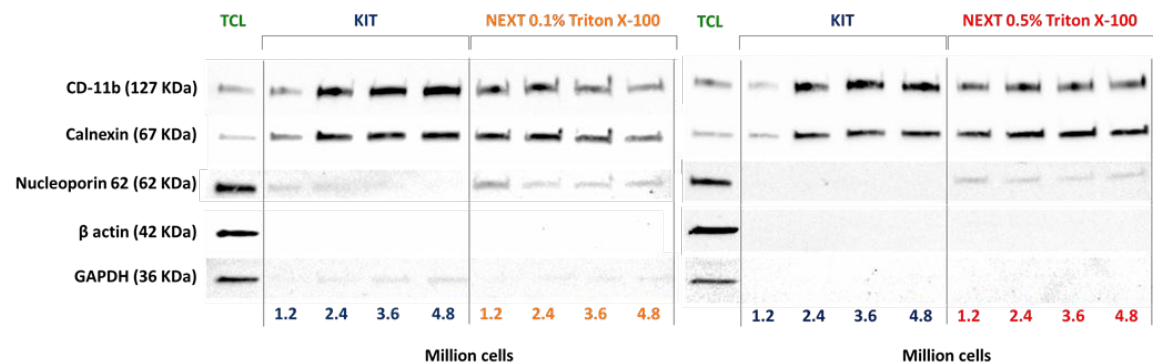
Liposome (with Extraction buffer2)



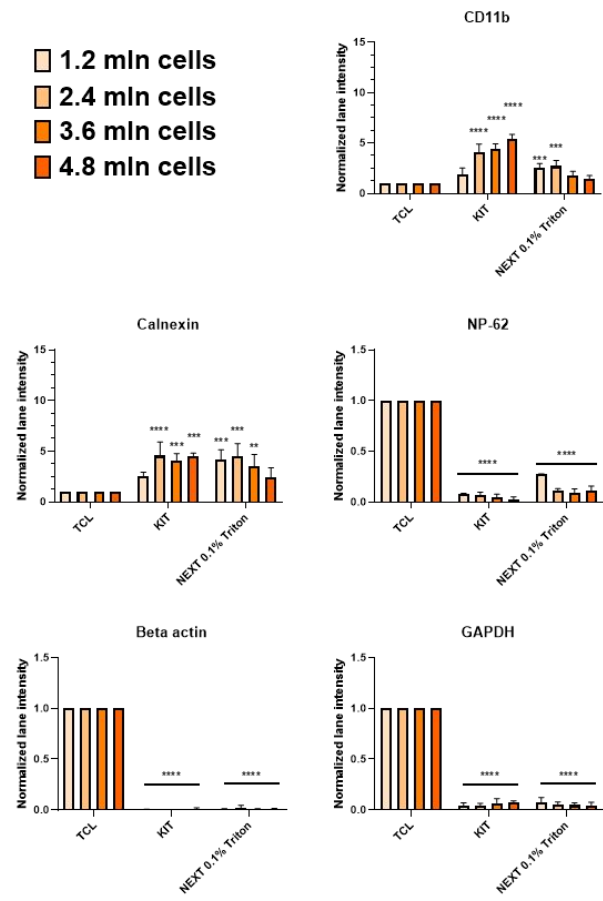
Extraction buffer2 volume in 1mL of formulation
(XX uL/Total 667uL)



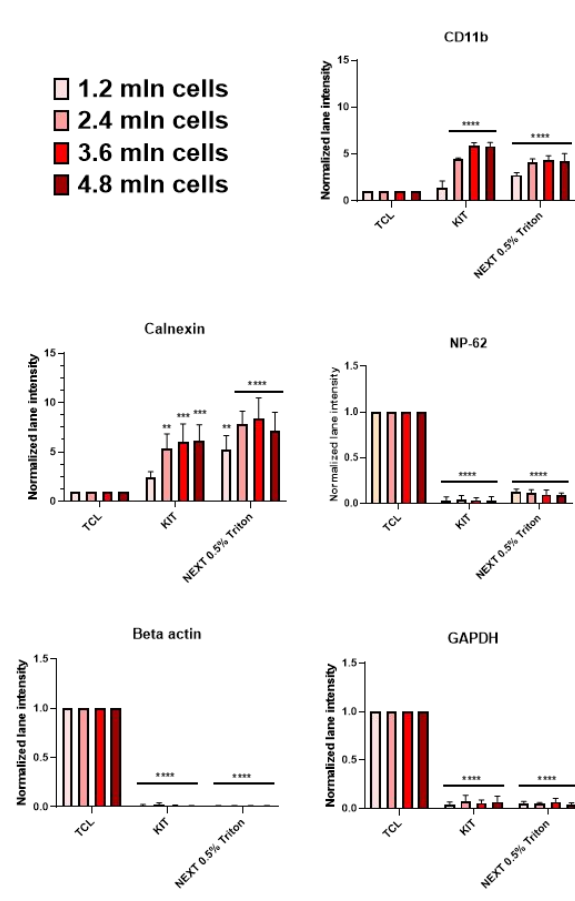
A



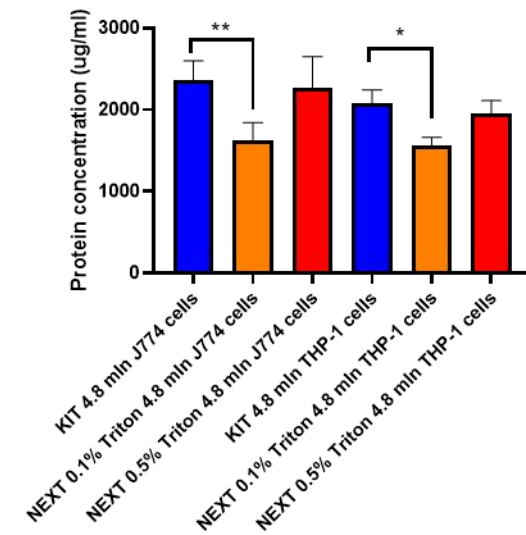
B



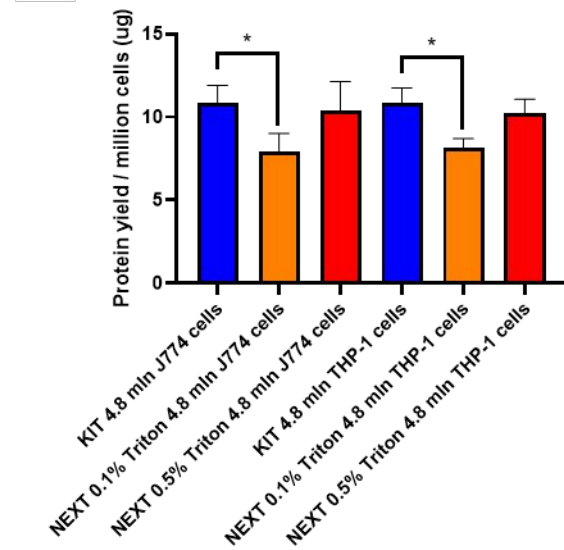
C



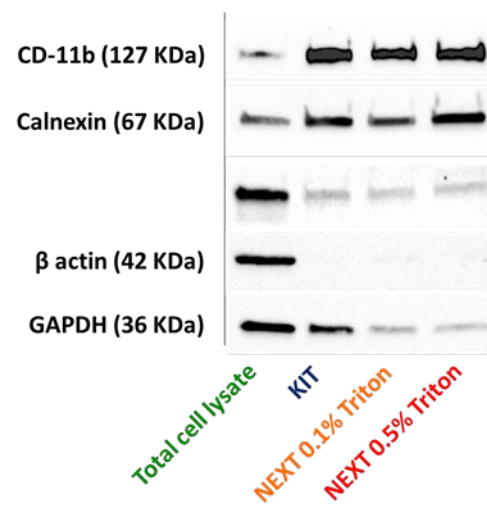
A



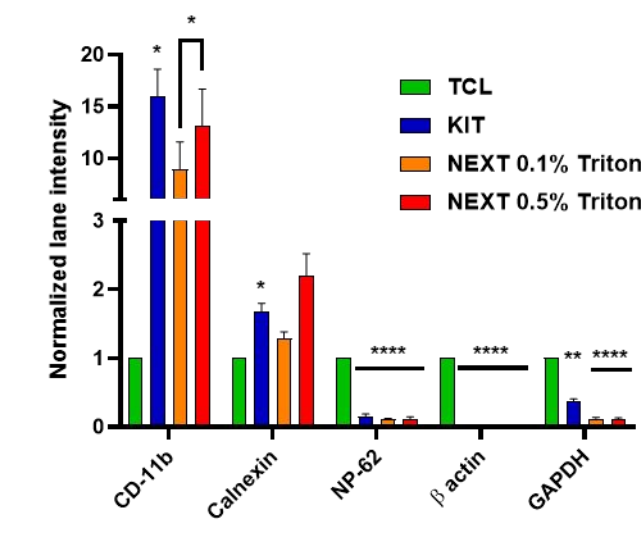
B



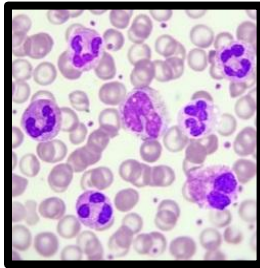
C



D

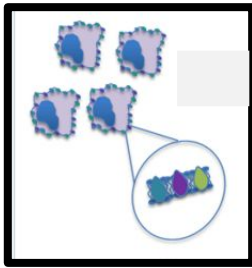


A



Leukocytes
cells

B

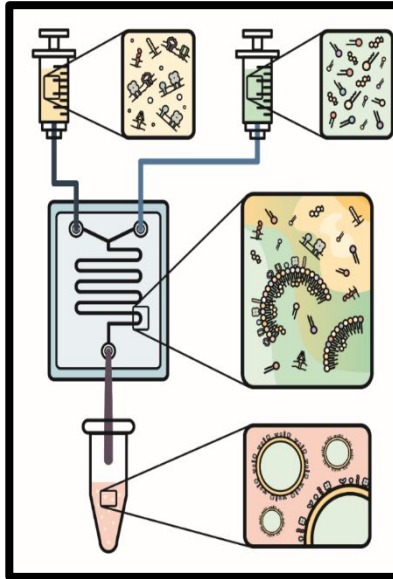


Membrane
protein
extraction

C

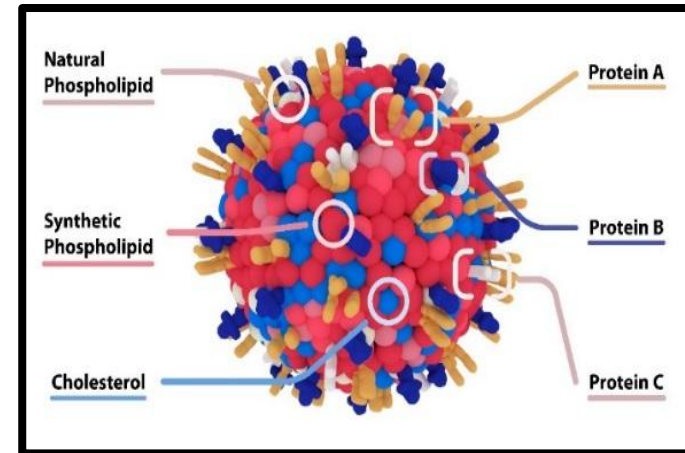
Cells
Membrane
proteins

Lipids
formulation



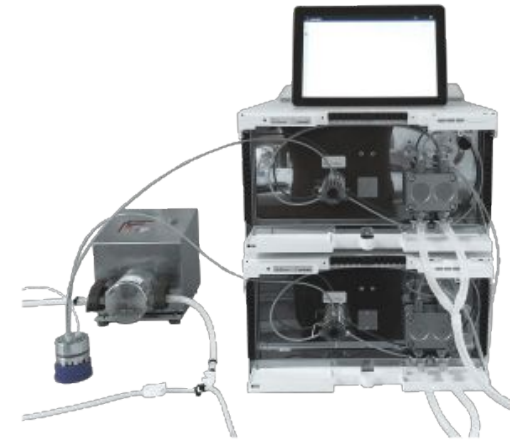
Synthesis

D



Providing
medicine

Develop Medicines Faster with NxGen



4 month acceleration

8 month acceleration

Discovery

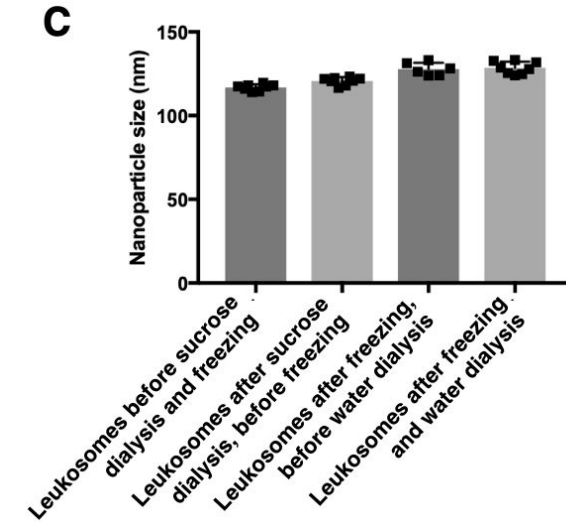
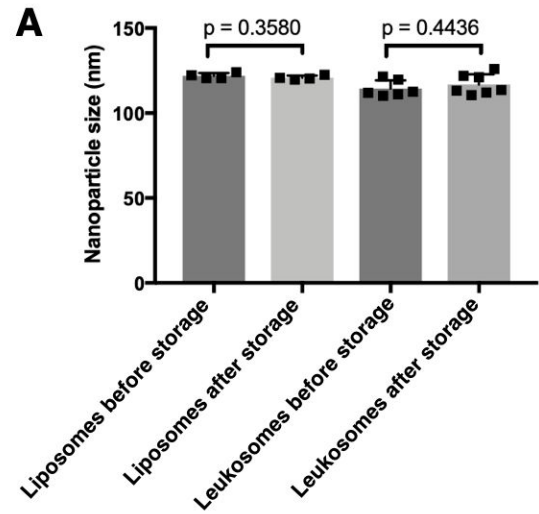
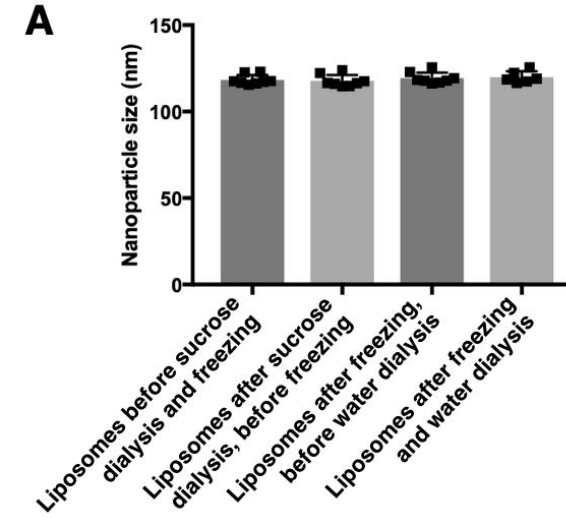
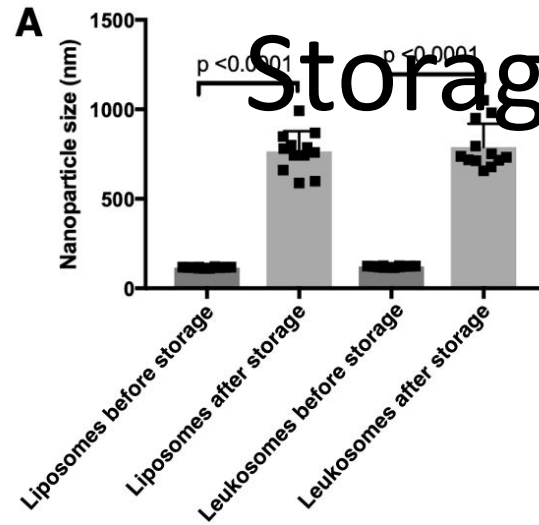
Early preclinical

Late preclinical

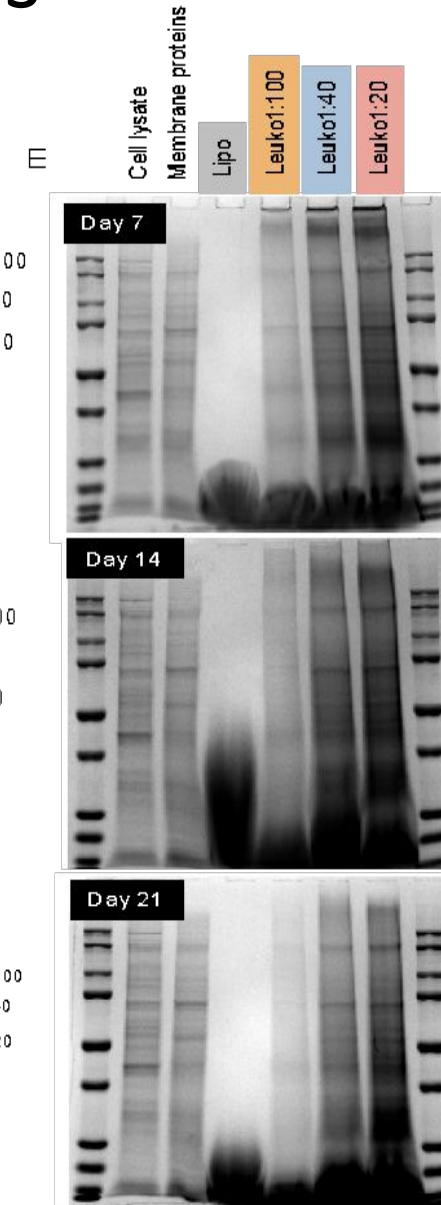
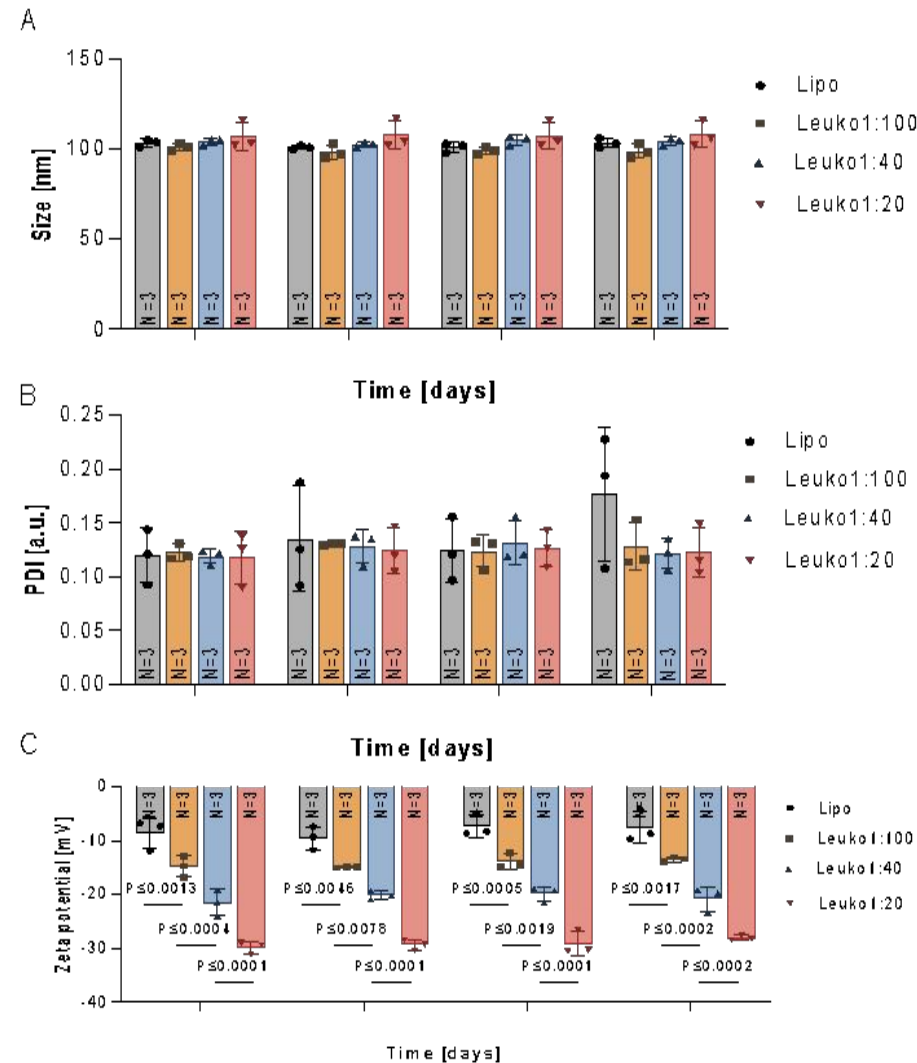
Clinical
development



Stability and Storage



Stability- 21 days



Take Home Message

- Leukosome is a platform that can be tuned for the specific application.
 - The potential of this platform for inflammatory based diseases.
 - Depending on the payload the re-adjustment can be far to be easy and requires a secondary engineering
 - Our preliminary data proved that there are hopes on the potential to translate this platform into the clinical practice
-





- If we want to reach the bedside we need to know HOW!
- What are the limitations?
- What is the next step?
- What is the final application?
- Where can I find funding for it?

ACKNOWLEDGMENTS



HMRI Nanomedicine Past Members

Dr. Roberto Molinaro
Dr. Claudia Corbo
Dr. Ennio Tasciotti
Dr. Anna Pasto'

Collaborators

Dr. Jason Yustein – Baylor
Dr. Bradley Weiner - HMH
Dr. John Cooke - HMRI



Robert J. Kleberg, Jr.
— and —
Helen C. Kleberg Foundation



CPRIT

HMRI

Center for Musculoskeletal Regeneration

Dr. Enrica DeRosa
Dr. Assaf Zinger
Dr. Federica Giordano
Dr. Stefania Lenna
Riccardo Rampado
Manuela Sushnitha
Gherardo Baudo
Matteo Massaro
April Ewing
Emma He

Chiara Mancino
Ava Brozovich
Francesca Paradiso
Stefano Serpelloni
Eliana Stetco
Dr. Takashi Hirase
Troy Hendrickson
Will May