

# Close to the Patient – Addressing formulation challenges in development of novel therapies

July 2024

# dsm-firmenich

We're a trusted partner to global companies operating in high-growth and resilient markets. We bring progress to life as innovators in nutrition, health, and beauty.

150+ years

of combined scientific discovery  
and innovation heritage

~30,000  
employees

€12+ bn  
revenue

# About DSM Biomedical

Taking biomaterials FURTHER

DSM Biomedical aspires to *solve the world's healthcare needs through sustainable science*

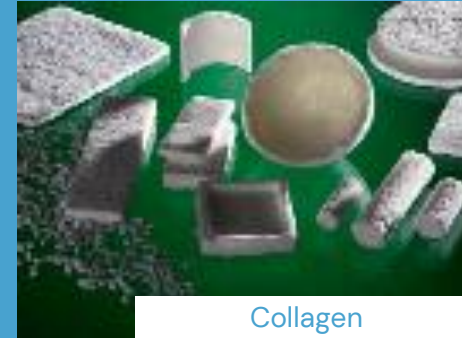
Through our extensive biomaterials portfolio and world-class capabilities, we empower our global partners to create and deliver transformative solutions that *elevate patient well-being, enable healthcare professionals, and foster sustainability*



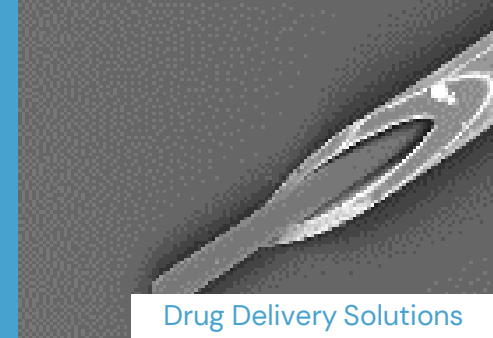
Bioceramics



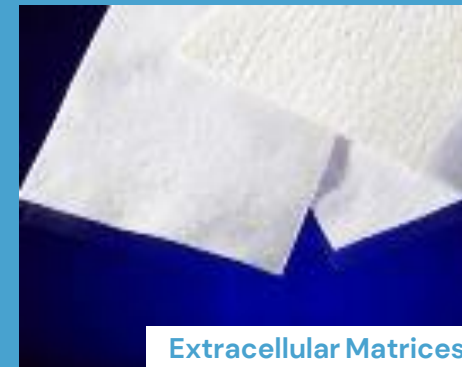
Hydrophilic Coatings



Collagen



Drug Delivery Solutions



Extracellular Matrices



Polyethylenes



Polyurethanes

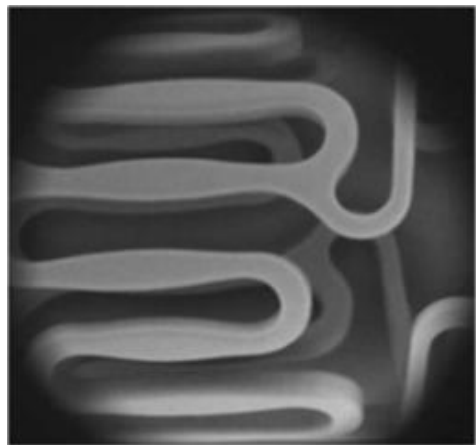


Polymer Processing Capabilities

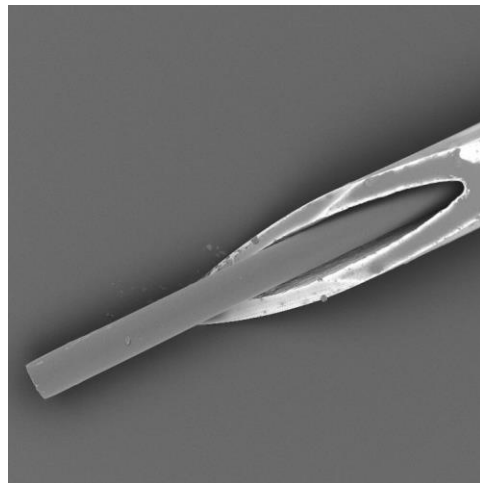
# TheraPEA™

## From legacy products to next generation therapies

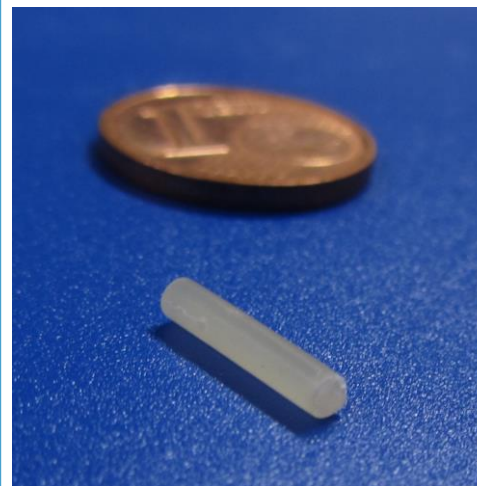
Drug Eluting Stent – Approved\*



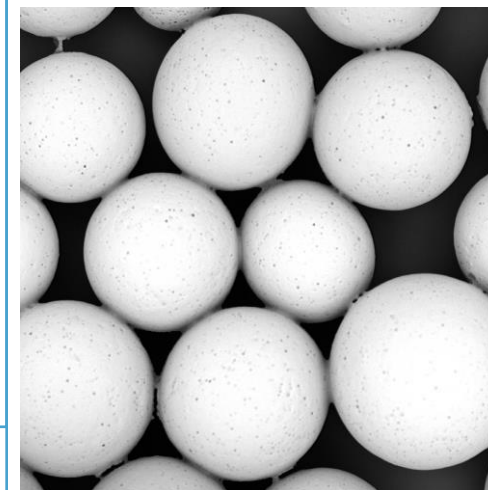
Injectable Implant – Clinical Development

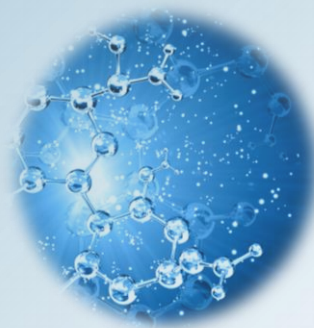


Sustained Delivery of GLP-1 RA – Preclinical



Next Generation  
Therapies – Preclinical



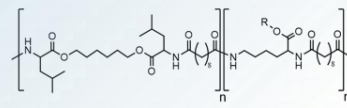


Slow and controlled release enables possibility of less frequent administration for the patient

Enables a solution that is good for the planet by minimizing sharps and other plastics use



## Biodegradable Polyester Amide Platform



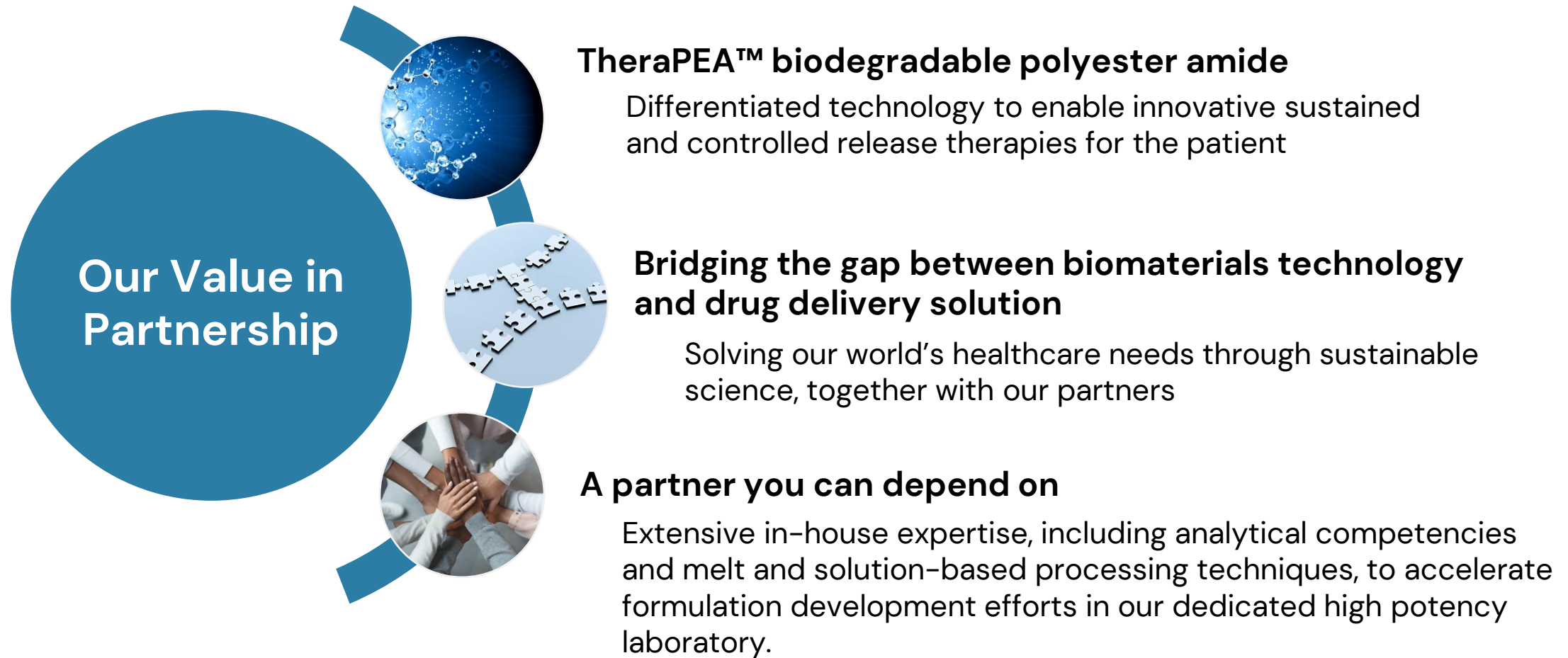
Enables controlled release per design and provides protection for sensitive API payload

Enables partners opportunities for branded sales protection and life cycle management



Enables multiple therapeutic forms; low melt temperature and solubility in low MW alcohols for ease of processing

# Why partner with DSM Biomedical?



# How Can DSM Biomedical Elevate Your Next Sustained Drug Delivery Project?

- Tech Forum Wed, July 10<sup>th</sup> 8AM  
**George Mihov, PhD** Close to the Heart – Biomaterial  
Developed to Serve Vascular Applications
- Visit our Booth  
**Booth #36**



DSMBiomedical.com



DSM Biomedical



Info.Biomedical@DSM.com



DSM Biomedical

**We bring progress to life™**